

Studies



Click the Studies button to display a list of studies. Click on a study on the list to add the study to the chart.

Hide - Uncheck the Hide check box to keep the Study panel showing after a study has been selected. This permits multiple studies to be quickly added to the chart. Check the Hide box to close the Studies panel after a study has been selected.

Properties - Click the Properties button to configure which studies are to be shown or hidden on the Studies panel. You may want to display only those studies that you use. Click the Save button that replaces the Properties button to save the changes.

Help - Click the Help button to open the Studies Manual.

Close - Click the red X button to close the Studies panel.

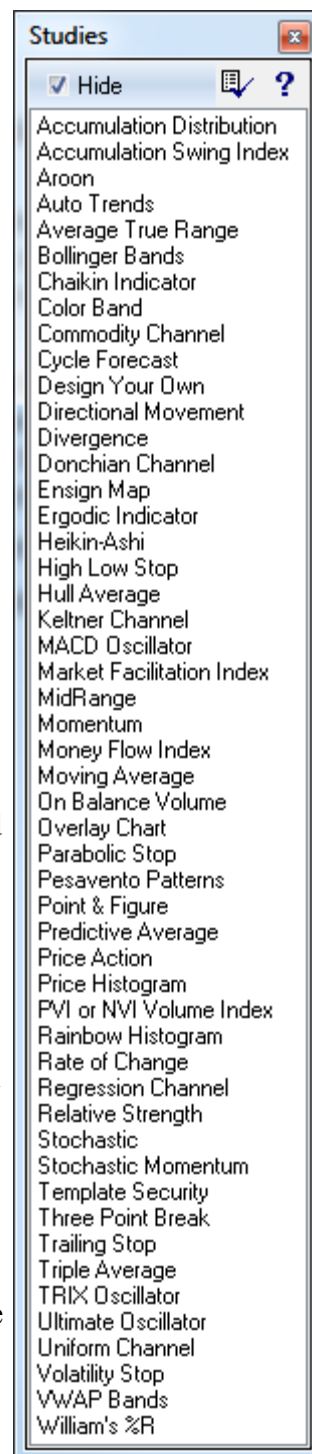
Overview

Ensign 10 has many Technical Studies to help analyze charts and to facilitate trading decisions. Studies can be drawn directly on a chart (overlaid on the chart bars), or drawn in nine study sub-windows that show below the chart. The study sub-windows can be vertically adjusted in size by holding down the mouse and dragging up or down in the sub-window.

Study Templates are used to apply multiple Studies to a chart with just one mouse click. For example, a Template could be used to quickly apply a Moving Average, Stochastic, and Relative Strength study to a chart. This is much faster than applying each study one at a time.

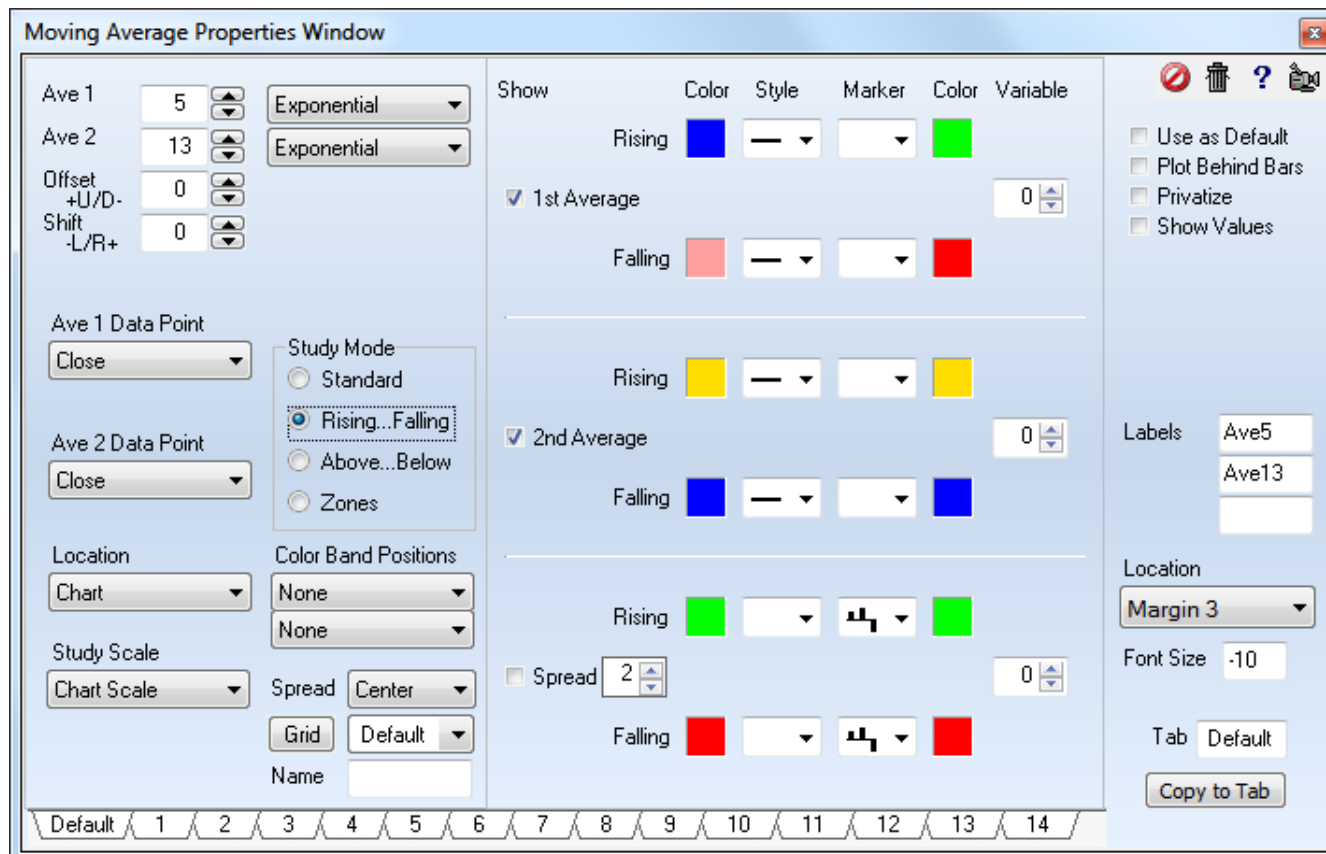
To view the properties window for any of the studies, click the Chart Objects button, then select the desired study on the list and click Properties. The properties window for each study displays several selections.

The Properties window allows you to customize the study settings and specify which study sub-window to plot the study in. Changing a study parameter in the Properties window will dynamically update the study on the chart. This allows you to experiment with different study settings and see the immediate result on the chart.



Properties

Each study will have its own unique Properties form. The property form for the Moving Average study is typical and is used as the example for the documentation.



Toolbar Buttons



Delete

Click this button to delete the study or draw tool from the chart.



Help

Click the help button to view the details of this study or draw tool.



Video

Click the video button to watch a training video.



Cancel

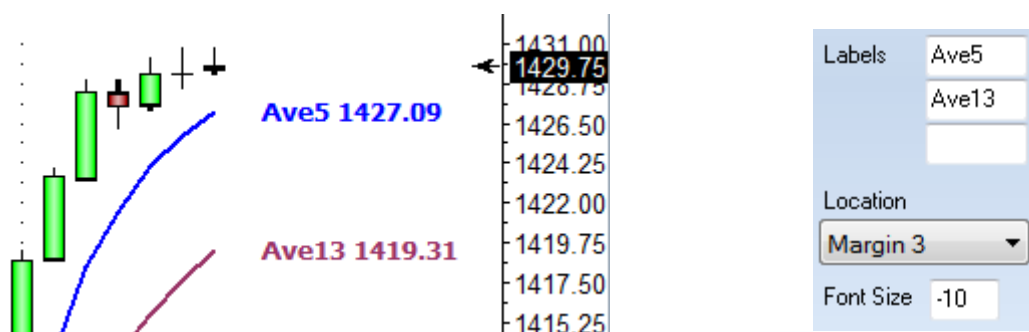
Click Cancel to abort any changes made in the properties window, and close the window. No changes will be made to the study or draw line.

Check Box Options

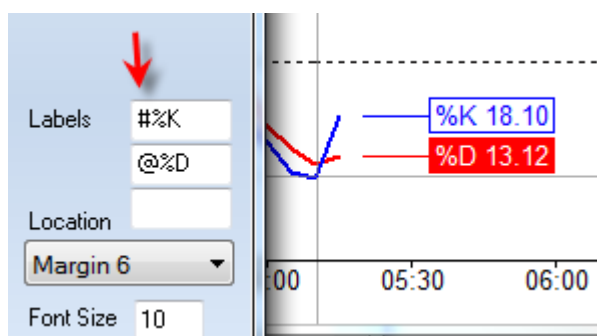
- ✓ Use as Default - Place a check mark next to 'Use as Default' to save the current settings as the default for all subsequent uses of this study or draw tool.
- ✓ Plot Behind Bars – Place a check mark in this box to have the study lines appear on the chart behind the chart bars.
- ✓ Privatize - Place a check mark next to 'Privatize' to hide a studies name and parameter settings. A chart will then display the name of the study as 'Custom'. This allows users to develop a proprietary settings and systems without disclosing the exact studies and settings they are using. Privatized studies can be saved and distributed in templates. Apply the 'Template Security' study to a chart to control the security settings.
- ✓ Show Values - Place a check mark next to 'Show Values' to display the studies values on the left edge of the chart (in the studies panel). These values show for the position of the cursor as it moves across the chart.

Line Labels

Study lines can show their current values at the end of the lines in the right side margin. Pick the label's location in the margin using the drop down selections. The Font Size can range from 6 to 72 points. Enter a negative size to make the font style **bold**. The example is 10 point bold. The label text is optional, and comes from the Label edit boxes.



The label can be framed by adding the # character as the 1st character of the label text. Or, the label can have a filled framed by adding @ as the 1st character of the label text.



Properties

- Ave 1 - Value for the 1st moving average - Followed by formula.
- Ave 2 - value for the 2nd moving average - Followed by formula.
- Offset +U/D - - Study lines can be optionally shifted Up or Down. Enter a price amount in the box to specify the offset distance.
- Shift -L/R+ -Optionally shift a study line Left or Right. Example, a value of 5 will shift the study line forward 5 bars. An entry of -10 will shift a line left 10 bars.
- Moving Average Formula - Several different calculations can be used including: Simple, Exponential, Weighted, Smoothed, Volume Weighted, Howard's, Adaptive, Butterworth, Gaussian, Attenuation and Median Filter.
- Ave 1 & 2 Data Points – This study can be calculated from one of several data point prices selected from the drop down menu.
- Study Mode – This study can color the average line based on 4 different modes
 - Standard – Plot the lines using the standard colors, styles, and markers.
 - Rising...Falling - The rising colors will be used when the study is rising. The falling colors will be used when the study is falling.
 - Above...Below - The Above colors will be used when the study is above the average line. The Below colors will be used when the study is below the average line
 - Zones – The zones mode allows you to have 3 different line settings based on the study value. Enter study values in the upper Zone box, and the lower Zone box. When the study is in each of the set zones the colors for that zone will be used.
- Location – A study can be plotted directly on the chart or in one of nine sub-windows. Select the location from the drop-down box.
- Study Scale – Use the drop-down box to select the desired study scale.
- Color Band Positions – This drop-down list allows a study to be plotted as a color bar instead of a regular line. This can be useful in condensing a study down to just a band. The color of the band will indicate if it is up or down. The first color band drop-down list is used to specify a location for the first study line. The second color band drop-down list is useful to specify a position for the second study line. A variety of positions can be selected
- Spread Alignment – Select 'Left', 'Center', or 'Right' to shift the spread histogram lines one pixel to the left or right hand of the chart. This may be desirable if the histogram lines overlay and hide the chart bars. Shifting the histogram lines one pixel allows both the bars and the histogram to be displayed at the same time.
- Study Grid Lines – If a study is plotted in a study sub-window, then the grid line style, color, and different grid levels can be selected. Click the button that says 'Grid' to access the separate study grid window.
- Name – At the bottom of each property window is a box that allows you to change the name of that study. Simply type a new name in the text box next to 'Name'.
- Study Line Settings – The right side of this property window has controls for the way line settings.
 - Show – Place a check in the Show boxes to display or hide a specific study line. An optional moving average line can be plotted. The spread is equal to the study minus its moving average. The spread is often displayed as a histogram, and uses the histogram marker.
 - Zones – are used to select the levels of each zones when using that study mode.
 - Color – Click the square color boxes to specify a color for the line.
 - Style – A study line can be solid, thick, thin, dashed, dotted or a variety of other styles. Select a line style from the drop-down list.

- Marker – Select an optional marker to mark each value of the study on the chart. Click this link to the [Markers](#) document.
- Marker Color – Click the square color boxes to specify a color for the marker.
- Variables – There are 255 global variables which can hold study values. If this study is required as input for a ‘Design Your Own’ (DYO) study or an ESPL study, then you can store the indicated study value into the global variable.
- Spread Multiplier – The spread multiplier box is used to increase or decrease the height or amplitude of the spread lines.
- Tab – Each study has 14 tabs at the bottom of the study properties window. These tabs allow you to save separate settings of that particular study. The box next to the word ‘Tab’ allows you to enter your own name for that tab.