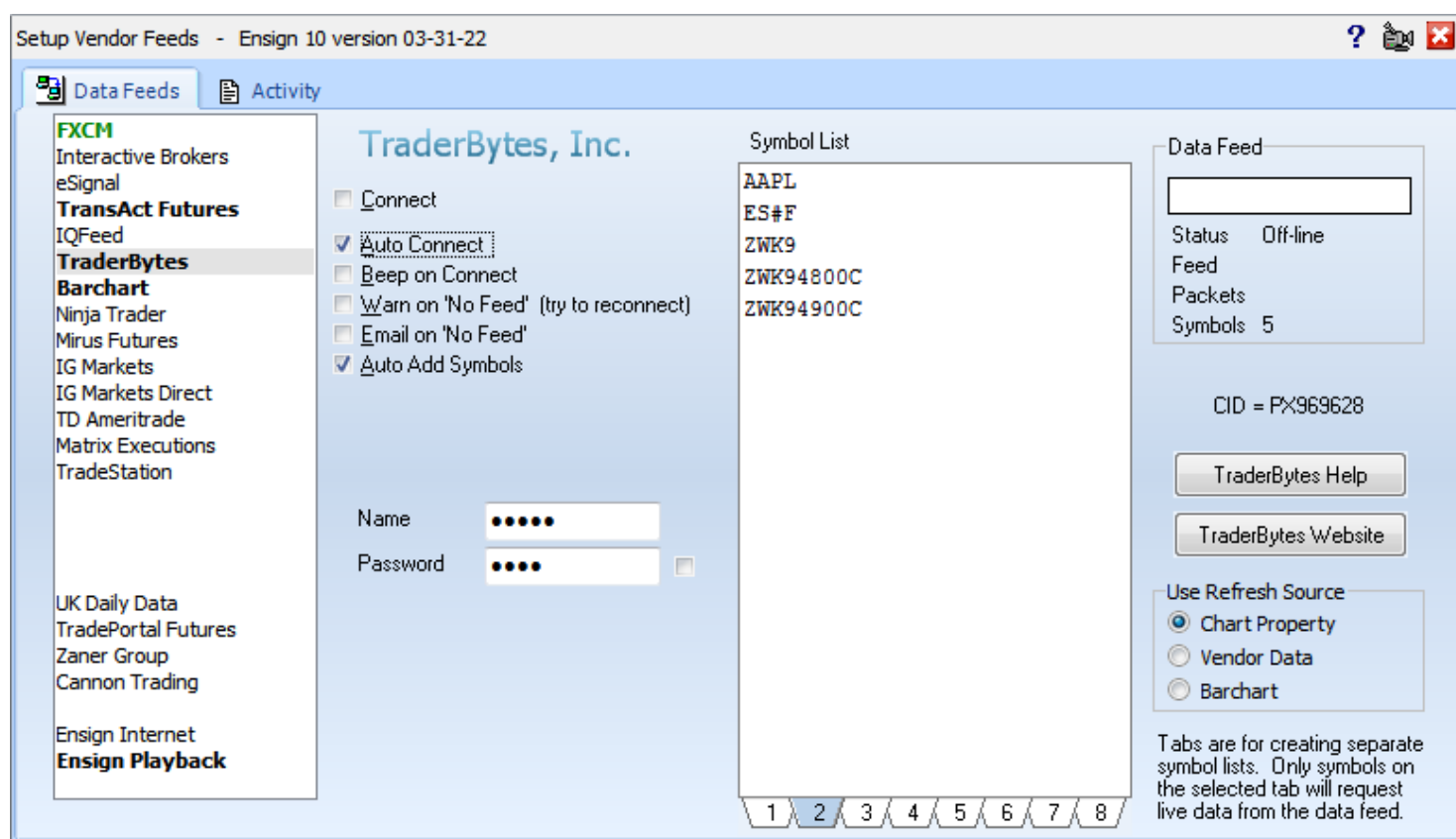


TraderBytes

Barchart is an independent company. They offer a real-time feed called Barchart. Ensign Software has arrangements with Barchart for 2 services.

1) We pay for access to their refresh servers so that Ensign can refresh our charts from Barchart using Barchart data. The cost for this service is included in the monthly subscription fee of \$49.95 that we collect for a customer subscription. We get a price break for this service because we purchase in bulk.

2) We have also white labeled the Barchart feed under the name of TraderBytes and negotiated great rates, which you will find on the www.traderbytes.com web page. You can sign up for TraderBytes on that web page. The subscription for the feed is collected by Barchart. So TraderBytes is Ensign's rebranding of the Barchart feed.



Connect – Check this box to connect to the data feed. Uncheck the box to disconnect from the data feed.

Auto Connect – Check this box to have Ensign automatically connect to the data feed when Ensign runs.

Beep on Connect – When checked, Ensign will make a sound when the data feed connects.

Warn on 'No Feed' – Display a warning message when data is not seen for 2 minutes.

Email on 'No Feed' – Send an email if the data is not seen for 2 minutes.

Auto Add Symbols – Check this box to have Ensign add symbols to the Symbol list automatically when a chart is opened for a new symbol.

Name – Enter the User name associated with your data feed account.

Password – Enter the Password associated with your data feed account.

Symbol List – The Symbol List is your personalized Watch List. Ensign will only receive real-time data for those symbols entered in this list. Type directly in the list to add, remove, or rearrange the symbols. There are tabs below the Symbol List that allow you to setup 8 different customized symbol lists. Only the list that is showing will be active.

Data Feed – The Data Feed panel displays status information about the data feed connection.

TraderBytes Website – Click this button to open and view the TraderBytes website.

Refresh Source - Some data feeds show this frame for selecting the Refresh Source used to refresh charts for that vendor. The 1st selection will refresh each chart according to the Refresh selection on the chart's property form. The 2nd selection will globally force the refresh to use the data feed. The 3rd selection will globally change the source to refresh from Barchart, etc.

Futures Symbol Guide

Futures and Futures Options can be obtained from the following exchanges: CME, CBOT, COMEX, KCBT, MGEX, ICE, NYMEX, and others. Trade the Currencies, Energies, Financials, Grains, Indices, Meats, Metals, and Softs. Press Ctrl-F on the keyboard to search down through the symbols.

Futures Commodity symbols are created in three parts: the root symbol, the month code, and the year code. The month code is represented with a single letter as displayed below:

F January
G February
H March
J April
K May
M June
N July
Q August
U September
V October
X November
Z – December

Note: Each Futures market symbol trades in specific contract months. For example, many of the currency and index symbols trade only in the H,M,U,Z months. Visit each futures exchange for details on a symbol's trading hours and trading months.

The year code is displayed as one digit:

2019 would be displayed as 9
2020 would be displayed as 0

For example, the Emini S&P 500, December 2019 would be ESZ9
ES is the root symbol, Z is the month of December , 9 is for the year 2019

Sample Futures Symbols

ESZ9	Emini S&P 500, December 2018 contract
NQH0	Emini Nasdaq, March 2020 contract
YMH0	Emini Dow Jones, March 2020 contract

Root Symbols for several Futures Markets and Exchanges

<p>CME Emini Package (Globex)</p> <ul style="list-style-type: none"> E7 EMini Euro FX E8 EMini Eurodollar 5Year Bundle EA EMini MSCI EAFE EB EMini Eurodollar EO EMini S&P 500 EUR ER EMini MSCI EMI ES EMini S&P 500 EW EMini S&P Midcap FN EMini Xinhua 25 J7 EMini Japanese Yen NB EMini Nasdaq Bio NC EMini Nasdaq Comp NQ EMini Nasdaq 100 PC EMini S&P SmallCap SO EMini S&P Asia 50 	<p>CBOT Mini Package</p> <ul style="list-style-type: none"> YM MidSized (\$5) Dow Industrials YC MiniSized Corn XN MiniSized Corn XW MiniSized Wheat XK MiniSized Soybeans
<p>Chicago Board of Trade (CBOT Streaming)</p> <ul style="list-style-type: none"> ZC Corn ZO Oats ZW Wheat ZS Soybeans ZR Rough Rice ZM Soybean Meal ZL Soybean Oil ZA Soybean South American ZK Ethanol FZ Ethanol OTC Swaps EG Ethanol Gulf Coast EN Ethanol Los Angeles EH Ethanol New York CS Soybean Crush CM Southern Minnesota Corn Basis Swap CN Eastern Nebraska Corn Basis Swap CO Eastern South Dakota Corn Basis Swap CY Northeastern Iowa Corn Basis Swap DO Southern Iowa Corn Basis Swap FQ Corn Calendar Swap FR Soybean Calendar Swap FU Wheat Calendar Swap ZB 30 Year TBond ZN 10 Year TNote ZF 5 Year TNote ZT 2 Year TNote QS 30 Year Interest Rate Swap SR 10 Year Interest Rate Swap J8 7 Year Interest Rate Swap SA 5 Year Interest Rate Swap ZQ 30 Day Fed Funds 	<p>Chicago Mercantile Exchange (IMM)</p> <ul style="list-style-type: none"> A6 Australian Dollar B6 British Pound D6 Canadian Dollar J6 Japanese Yen E6 Euro FX S6 Swiss Franc M6 Mexican Peso L6 Brazilian Real N6 New Zealand Dollar R6 Russian Ruble T6 South African Rand RP Euro/Pound RY Euro/Yen RF Euro/Swiss SK Swedish Krona NR Norwegian Krone UA Euro/Krona UB Euro/Krone UC Euro/Australian UE Euro/Canadian UF Canadian/Yen UG Australian/Canadian UI Australian/New Zealand UK Australian/Yen UN British Pound/Swiss Franc UR British Pound/Yen UP Swiss Franc/Yen WC Czech Koruna WE Euro/Czech Koruna WH Hungarian Forint WP Polish Zloty

<p>F2 Fed Funds Binary Options ZD Dow Industrials (E) DD BigSized (\$25) Dow Industrials AH Dow Jones AIG Excess Return Index DH Dow Jones Real Estate Index CX Liquid 50 Swap Index DC Dow Composite DT Dow Transports DU Dow Utilities</p>	<p>WU Euro/Hungarian Forint WY Israeli Shekel WZ Euro/Polosh Zloty KZ Korean Won QR Renminbi/Yen QV Renminbi/Euro QT Chinese Renminbi E4 Turkish Lira E5 Euro Turkish Lira MB EMicro GBP/USD MF EMicro EUR/USD MG EMicro AUD/USD MH EMicro USD/JPY MM EMicro USD/CAD MN EMicro USD/CHF CZ CME \$ Index GE Eurodollar GP Eurodollar Cal Spread F1 SPX Synth ED Cal SPD GJ Euroyen Tibor EL Euroyen Libor GH 1Month Libor C7 Eurozone CPI Index JB Japanese Bond FD 3Month (OIS) Swaps S2 2Yr Swap Rate S5 5Yr Swap Rate S0 10Yr Swap Rate</p>
<p>Chicago Mercantile Exchange (IOM)</p> <p>SP S&P 500 Index ND Nasdaq 100 MD S&P Midcap 400 SG S&P 500/Barra Growth SU S&P 500/Barra Value PH S&P SmallCap 600 PP S&P Depositary SPY PZ Nasdaq 100 QQQQ PR iShares Rus 2000 NL Nikkei 225 Yen NY Nikkei 225 GD GSCI G7 GSCI Excess Return G8 GSCI Excess Return Swap Index C0 S&P GS Natural Gas ER OE S&P 100 OEX</p>	<p>Chicago Mercantile Exchange (CME)</p> <p>GF Feeder Cattle LE Live Cattle HE Lean Hogs LS Lumber</p>
<p>Kansas City Board of Trade (KCBT)</p> <p>KE Kansas City Wheat MV Value Line Futures</p>	<p>Minneapolis Grain Exchange (MGEX)</p> <p>MW Spring Wheat IH HRWI Hard Red Wheat IP HRSI Spring Wheat Index IW SRWI Soft Red Index</p>

<p>Commodities Exchange (COMEX)</p> <p>AL Aluminum HG High Grade Copper GC Gold SI Silver AM Gold Asian YN Emini Gold Kilo YS Emini Silver 1000oz</p>	<p>New York Mercantile Exchange (NYMEX)</p> <p>CL Crude Oil HO Heating Oil RB Gasoline RBOB RT Gasoline RBOB (E) LR Gasoline Gulf Coast PN Propane NG Natural Gas HP Natural Gas (E)</p>
<p>New York Mercantile Exchange emiNY package (NYMI)</p> <p>QM emiNY Crude Oil QH emiNY Heating Oil QU emiNY Gasoline Unleaded QG emiNY Natural Gas QO emiNY Gold QC emiNY Copper QI emiNY Silver</p>	<p>ICE New York Board of Trade (CSCE)</p> <p>KC Coffee CC Cocoa SB Sugar #11 SE Sugar #14 SD Sugar #16</p>
<p>ICE New York Board of Trade (NYCE)</p> <p>CT Cotton #2 OJ Orange Juice FCOJA</p>	<p>ICE New York Board of Trade (NYFE)</p> <p>CR CRB Futures Index CI Continuous CRB Index YV NYSE Composite</p>
<p>ICE New York Board of Trade (FINEX)</p> <p>DX U.S. Dollar Index EU Euro Futures AU Australian Dollar ZX New Zealand Dollar Plus many other Currency Futures</p>	<p>CBOE Futures Exchange (Chicago Futures Exchange CFE)</p> <p>VI Volatility Index VIX VN CBOE Nasdaq 100 VXN VE DJIA 30 VXD</p>
<p>NYSE Liffe</p> <p>YG Minisized Gold YI Minisized Silver ZG NYSE 100 oz Gold ZI NYSE 5000 oz Silver</p>	

Futures Options

Example: ZCH03600C Call for March 2020 Corn, 3600 strike