

Schwab

Ensign 10 can receive a data stream from Schwab. Schwab offers for free the following on this feed:

- Stocks – real time
- Indices – real time
- Futures – real time
- Forex Currencies – real time

To access this feed, you need to setup an account with Schwab, wherein you choose a username and a password. These values would then be entered on the Schwab Feed form in Ensign 10. Connecting to Schwab involves a few web pages, and Ensign 10 can populate the username and password fields for you to speed up the process.

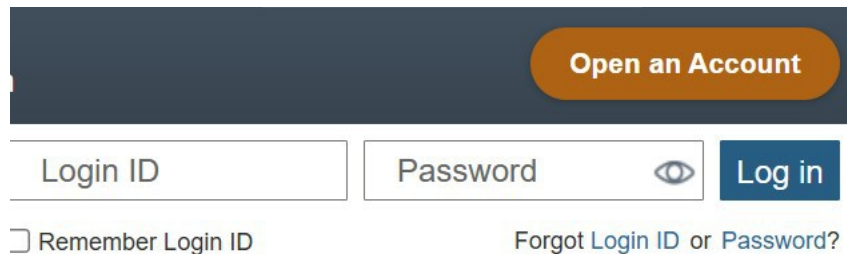
Note: Your Schwab account can be unfunded and yet you still get the data feeds.

The following instructions walk you through the process, which takes a few minutes to complete.

Step 1: Register

Go to UR: <https://www.schwab.com>

Click on the button for Open an Account shown on the top right-side of the screen.

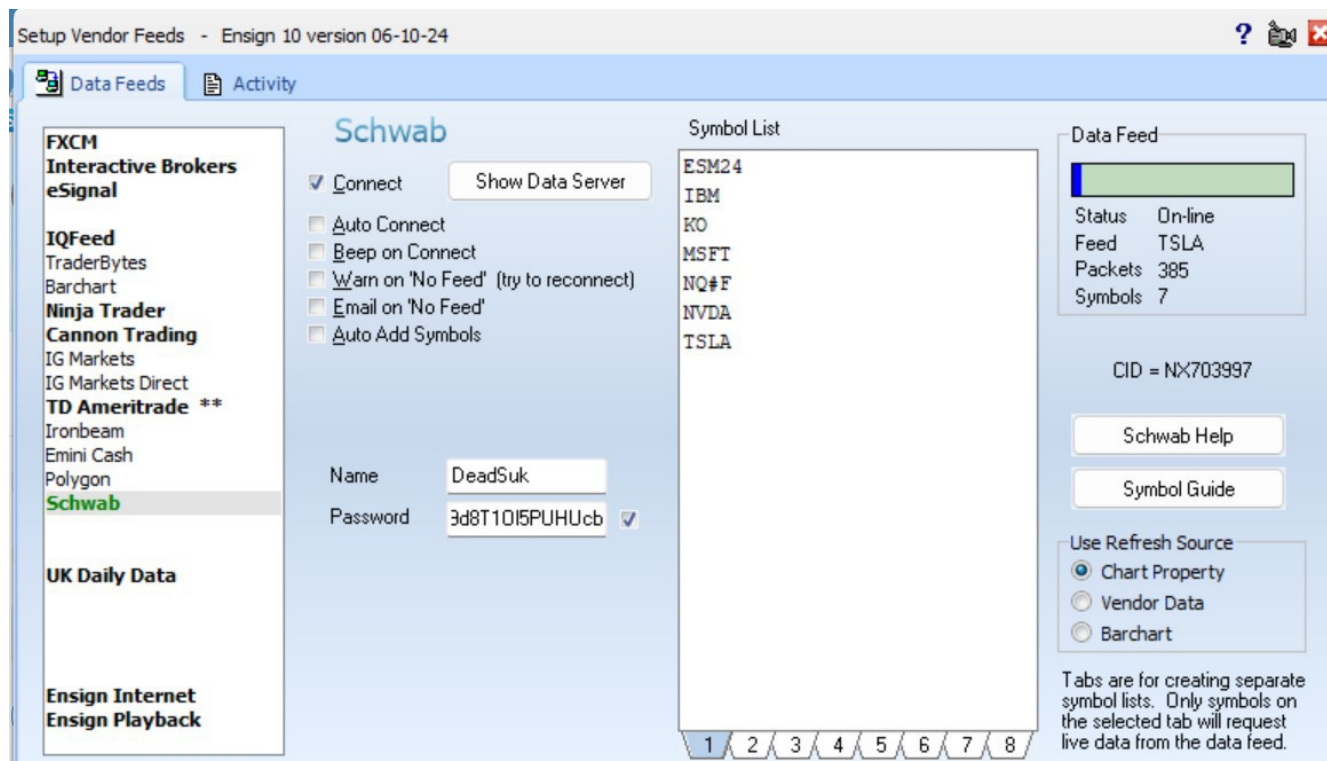


The image shows a screenshot of the Schwab website's login interface. At the top right, there is a dark blue header with a prominent orange button labeled "Open an Account". Below this, there are two input fields: "Login ID" and "Password". The "Password" field includes an eye icon for toggling visibility. To the right of the password field is a blue "Log in" button. Below the "Login ID" field is a checkbox labeled "Remember Login ID". To the right of the "Password" field is a link that says "Forgot Login ID or Password?".

Fill in the various forms and click the various buttons to accept the regulations.

Step 2: Configure Ensign 10

In Ensign 10, click menu Setup | Feeds. Select Schwab in the column of Data Feeds. Enter your username and password in the fields. Ensign 10 will populate Schwab connect web pages with your entries.



Connect – Check this box to connect to the data feed. Uncheck the box to disconnect from the data feed.

Auto Connect – Check this box to have Ensign automatically connect to the data feed when Ensign runs.

Beep on Connect – When checked, Ensign will make a sound when the data feed connects.

Warn on 'No Feed' – Display a warning message when data is not seen for 2 minutes.

Email on 'No Feed' – Send an email if the data is not seen for 2 minutes.

Auto Add Symbols – Check this box to have Ensign add symbols to the Symbol list automatically when a chart is opened for a new symbol.

Symbol List – The Symbol List is your personalized Watch List. Ensign will only receive real-time data for those symbols entered in this list. Type directly in the list to add, remove, or rearrange the symbols. There are tabs below the Symbol List that allow you to setup 8 different customized symbol lists. Only the list that is showing will be active.

Data Feed – The Data Feed panel displays status information about the data feed connection.

Step 3: Connect to Schwab

The first web page that shows is Schwab's Login form. This is where your username and password are entered. Ensign 10 can populate these fields automatically and advance to Schwab's next page.

Scroll to the bottom, check the box, and click the Continue button.

By checking this box, I instruct Schwab to grant access to my Schwab account and Account Information to a Third-Party Application. In providing this instruction, I also understand and acknowledge the risks and limitations described above, including but not limited to the limitations on Schwab's liability for what happens to my Schwab account and Account Information after it has been accessed by a Third-Party Application.

Cancel

Continue

Click the **Accept**, **Continue** and **Done** buttons that show on subsequent pages.

The Schwab web pages disappear when the connection is completed.

Symbol Guide

This symbol guide documents how to enter symbols into Ensign 10 for the Schwab data feed.

Stocks – Use the stock symbols as found on the Schwab web site.

| | | |
|-----------|------|-------------------|
| Examples: | KO | The Coca-Cola Co. |
| | TSLA | Tesla Inc. |
| | NVDA | Nvidia Corp. |

Indices – Use the symbols found on the Schwab web site. All Index symbols in Ensign 10 begin with a '\$' character.

| | | |
|-----------|-------|------------------------------|
| Examples: | \$DJI | Dow Jones Industrial Average |
| | \$SPX | S&P 500 Index |

Futures Contract Month Codes – The format is root, month, and a 2-digit year

- F - January
- G - February
- H - March
- J - April
- K - May
- M - June Example: ESM25 E-mini S&P June 2025 Futures Contract
- N - July
- Q - August
- U - September
- V - October
- X - November
- Z - December

The continuation symbols for Schwab will be the root symbol followed by a # character.

Ensign also supports the continuation symbol format of #F being appended:

| | | |
|-----------|------|--------------------------------|
| Examples: | ES# | E-mini S&P continuation symbol |
| | ES#F | E-mini S&P continuation symbol |
| | ZC# | Corn continuation symbol |
| | ZC#F | Corn continuation symbol |

Currencies – Use the symbols found on the Schwab web site. Format is xxx/yyy where xxx and yyy are currency abbreviations.

| | | |
|-----------|---------|---------------------------------------|
| Examples: | AUD/CAD | Australian Dollar and Canadian Dollar |
| | EUR/USD | Eurodollar and U.S. Dollar |
| | EUR/GBP | Eurodollar and British Pound |

Refresh

Refresh for Stocks and Indices can be either from Schwab or from Barchart. The choice of the refresh source is selected on the chart's property form.

Stocks, Futures and Currencies refresh from Barchart under Ensign's license with Barchart.