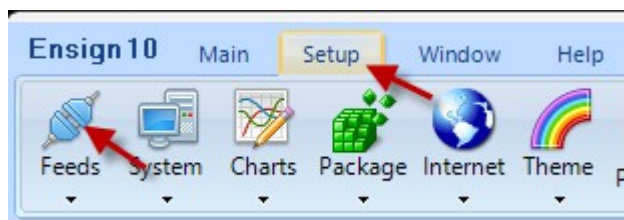
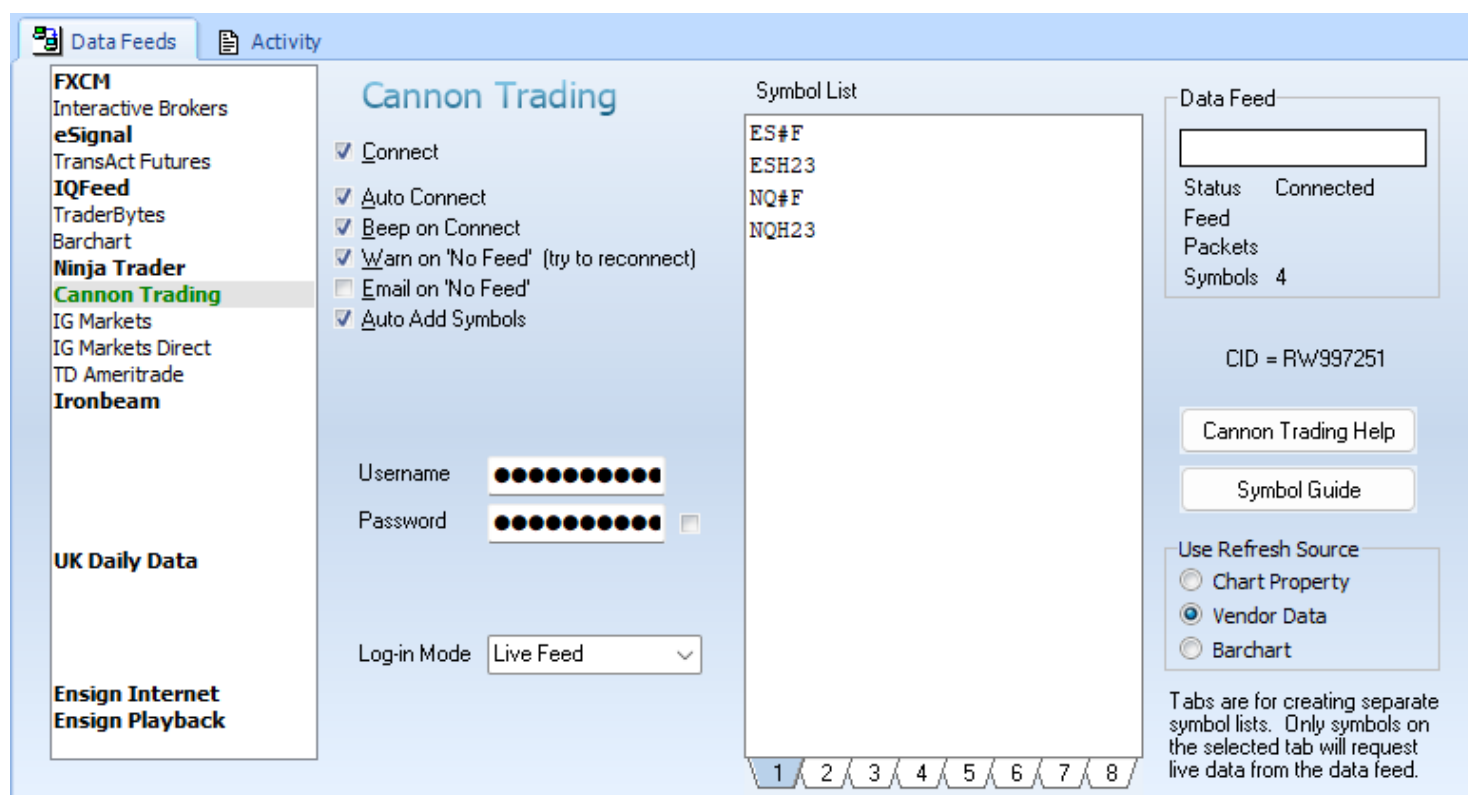


Feeds

Ensign can receive live market data from various brokers and data vendors. The Playback feature in Ensign is also a data source for updating charts with past data (replaying a particular day so that you can practice trading). To configure the settings for a particular data source click the 'Setup' tab on the main ribbon, and then click the 'Feeds' icon.



The following Feeds window will be displayed. Select a 'Data Feed' from the list on the left and then enter the appropriate configurations that are necessary to make a successful connection to the data source (including Username and Password if necessary). If needed, Ensign can connect to more than one data source at the same time. Place a check mark in the 'Connect' box to start the connection.



Connect – Check this box to connect to the data feed. Uncheck the box to disconnect from the data feed.

Auto Connect – Check this box to have Ensign automatically connect to the data feed when Ensign runs.

Beep on Connect – When checked, Ensign will make a sound when the data feed connects.

Warn on 'No Feed' – Display a warning message when data is not seen for 2 minutes.

Email on 'No Feed' – Send an email if the data is not seen for 2 minutes.

Auto Add Symbols – Check this box to have Ensign add symbols to the Symbol list automatically when a chart is opened for a new symbol.

Receive All Symbols - For the FXCM Forex data feed, this will cause all symbols to be received.

Show Inverse Pairs – For the FXCM Forex data feed, this will cause inverse symbol pairs to appear. For example the software will show both USD/JPY and JPY/ USD.

Username – If required, enter the Username associated with your broker or data vendor account.

Password – If required, enter the Password associated with your broker or data vendor account.

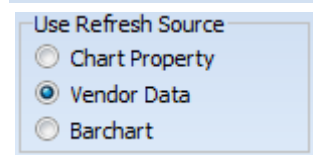
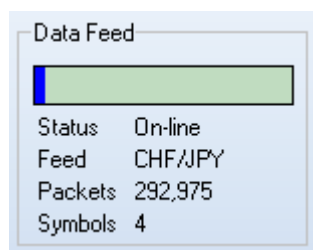
Symbol List – The Symbol List is your personalized Watch List. Ensign will only receive real-time data for those symbols entered in this list. Type directly in the list to add, remove, or rearrange the symbols. There are 6 tabs below the Symbol List that allow you to setup 8 different customized symbol lists. Only the list that is showing will be active.

Data Feed – The Data Feed panel displays status information about the data feed connection.

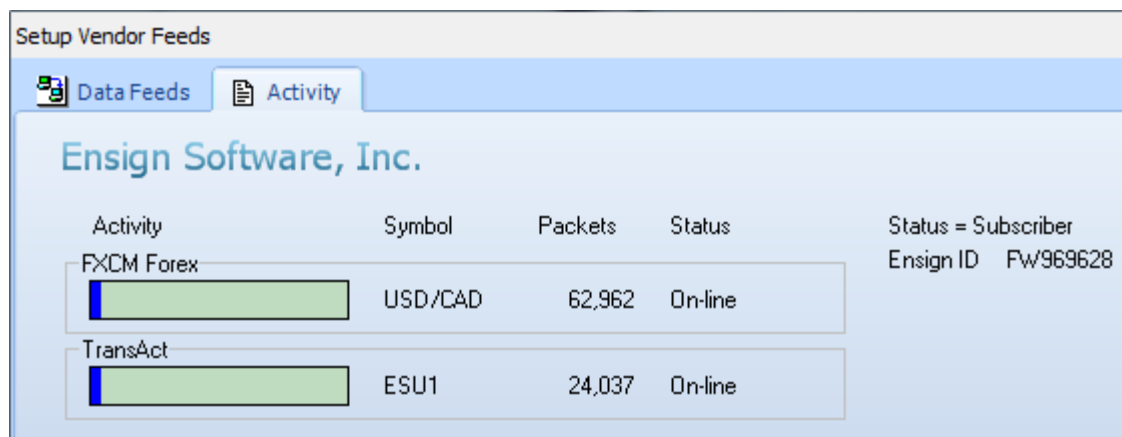
Symbol Guide – Click this button to open and view the data feed Symbol Guide on the web.

Run Button – Some of the data feeds will have a RUN button that allows you to manually run the data software where the data originates and connects to Ensign.

Refresh Source - Some data feeds show this frame for selecting the Refresh Source used to refresh charts for that vendor. The 1st selection will refresh each chart according to the Refresh selection on the chart's property form. The 2nd selection will globally refresh charts from the data vendor. The 3rd selection will globally change the source to refresh from Barchart.com (which is a data source that Ensign can use).



Activity



Click the Activity tab to view a summary of all the feeds that are currently being used.

The gauges will have a green background when data is being processed. The gauges will have a white background when a connection is being established or when data has stopped flowing.

All data feeds supported by Ensign can be received simultaneously. The Forex feed from FXCM is a real-time feed included FREE with your Ensign subscription.

The other data feeds require a subscription with a data vendor, or require you to have a brokerage account. Fees vary among data vendors. Some real-time data feeds from brokers are free but require

that you have an active trading account with the broker. Data vendors usually collect exchange fees for real-time data. These fees are reduced or waived some brokerage data feeds. Some of the supported broker data sources include: Cannon Trading, Interactive Brokers, Ninja Trader and TD Ameritrade.