

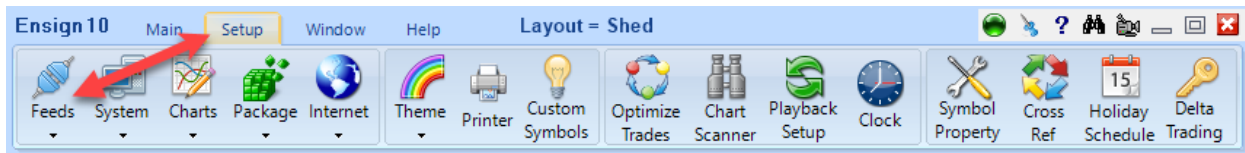
Interactive Brokers

Note:

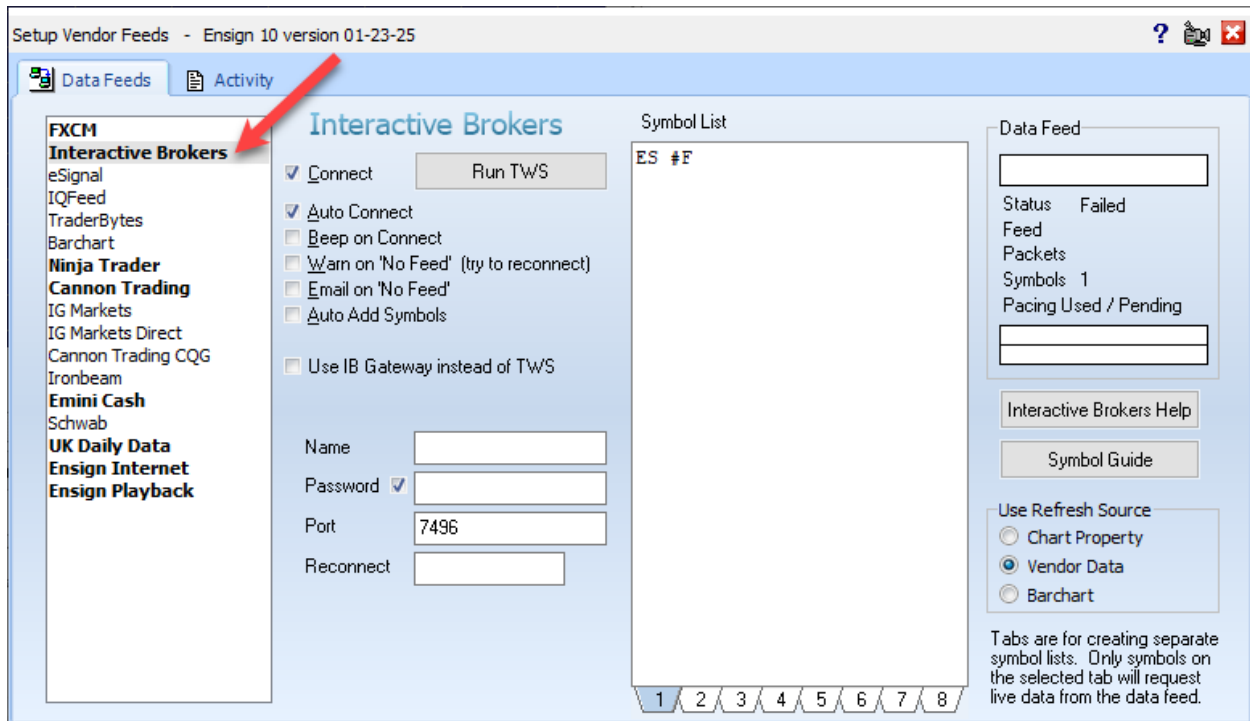
1. The Interactive Brokers Trader Work Station (TWS) needs to be installed on your computer in order for Ensign to connect to the Interactive Brokers data feed. Click [HERE](#) if you need to download and install the TWS.
2. Enable ActiveX and Socket Clients needs to be enabled in the TWS in order for Ensign to connect to the Interactive Brokers data feed. Click [HERE](#) for instructions.
3. Symbols you want to watch in Ensign need to be updating in the TWS.

Once the TWS is installed on your computer and 'Enable ActiveX and Socket Clients' is enabled, you can connect Ensign to the TWS data feed.

Click Setup | Feeds to display the Setup Vendor Feeds window.



Select 'Interactive Brokers' on the left and use this window to connect the TWS data feed to Ensign by following the steps below.



1. Enter your Interactive Brokers 'User Name' and 'Password' using Case Sensitive characters (use the checkbox next to 'Password' to show the entries).
2. Type the symbols you will be watching into the 'Symbol List' using CAPITAL LETTERS.
3. Check the 'Auto Connect' and 'Connect' check boxes (after a few seconds, green will display in 'Data Feed' box with a small amount of blue and 'Status' will show 'Connected').

Note: 'Interactive Brokers' on the left will show in Red if an incorrect User Name or Password was entered. Uncheck the 'Connect' box and re-enter the correct User Name and Password, then re-check the 'Connect' box to connect.

Related Links

[Interactive Brokers Trader Workstation \(TWS\) Download](#)

[Interactive Brokers Enable ActiveX and Socket Clients](#)

[Interactive Brokers Symbol Guide](#)

[Quote](#)

[Chart](#)

[Feeds Overview](#)