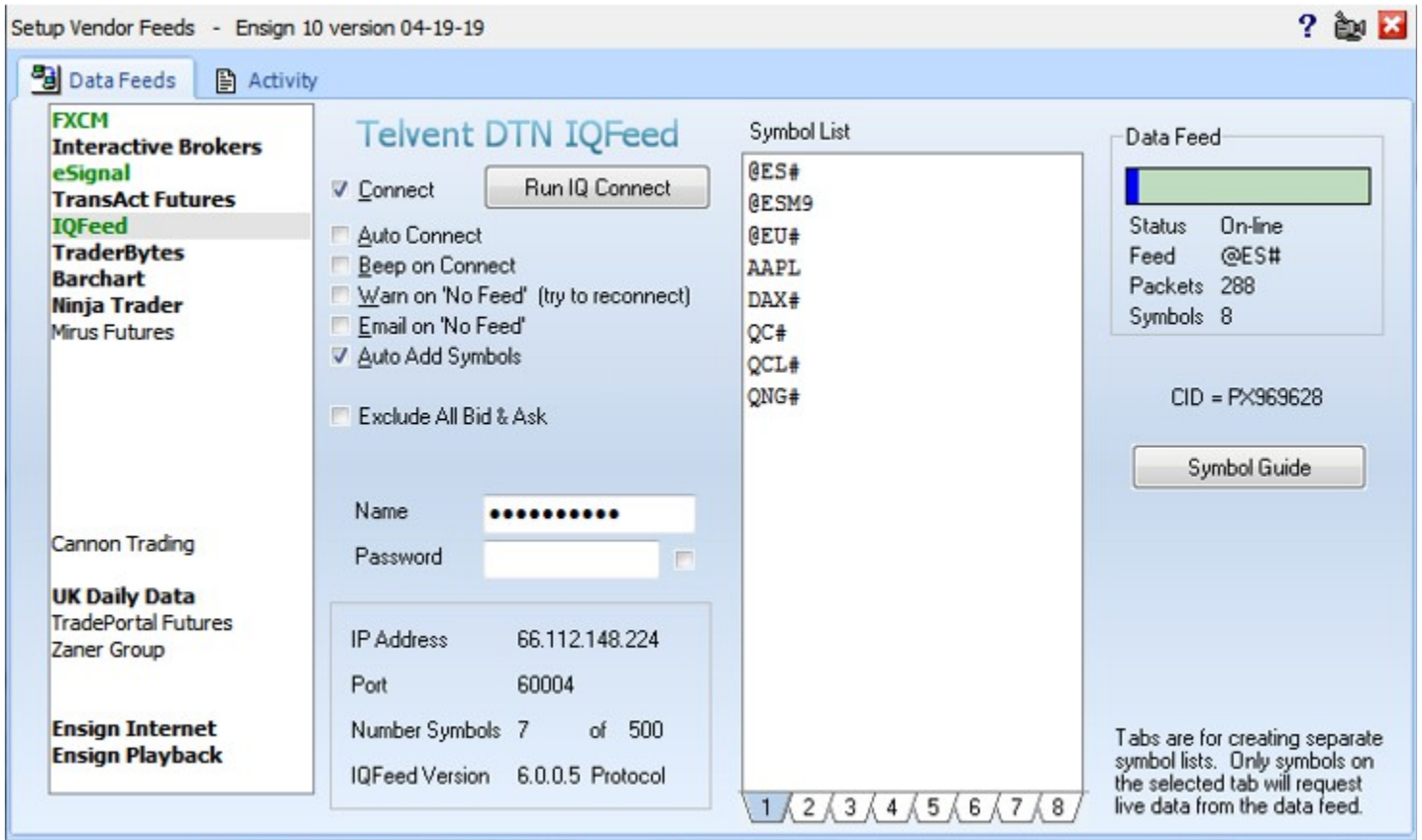


IQFeed

Before using the DTN IQFeed you must download and install the IQFEED program from the Ensign web site Downloads page. You must also subscribe to the DTN IQFeed data-feed service so that you have a data-feed account with DTN. If you have questions about DTN IQFeed please contact DTN.



Connect – Check this box to connect to the data feed. Uncheck the box to disconnect from the data feed.

Auto Connect – Check this box to have Ensign automatically connect to the data feed when Ensign runs.

Beep on Connect – When checked, Ensign will make a sound when the data feed connects.

Warn on 'No Feed' – Display a warning message when data is not seen for 2 minutes.

Email on 'No Feed' – Send an email if the data is not seen for 2 minutes.

Auto Add Symbols – Check this box to have Ensign add symbols to the Symbol list automatically when a chart is opened for a new symbol.

Exclude All Bids & Asks – Check this box to significantly reduce the amount of data feed traffic on the Internet.

Name – Enter the User name associated with your data feed account.

Password – Enter the Password associated with your data feed account.

Symbol List – The Symbol List is your personalized Watch List. Ensign will only receive real-time data for those symbols entered in this list. Type directly in the list to add, remove, or rearrange the symbols. There are 8 tabs below the Symbol List that allow you to setup 8 different customized symbol lists. Only the list that is showing will be active.

Data Feed – The Data Feed panel displays status information about the data feed connection.

Symbol Guide – Click this button to open and view the data feed Symbol Guide on the web.

Run IQ Connect – Click to manually run the IQConnect software which interfaces with Ensign.

Symbols

Futures symbols will use the IQFeed format which is the root symbol, month letter, year digits.
Example: @ESZ19 (December 2019 contract).

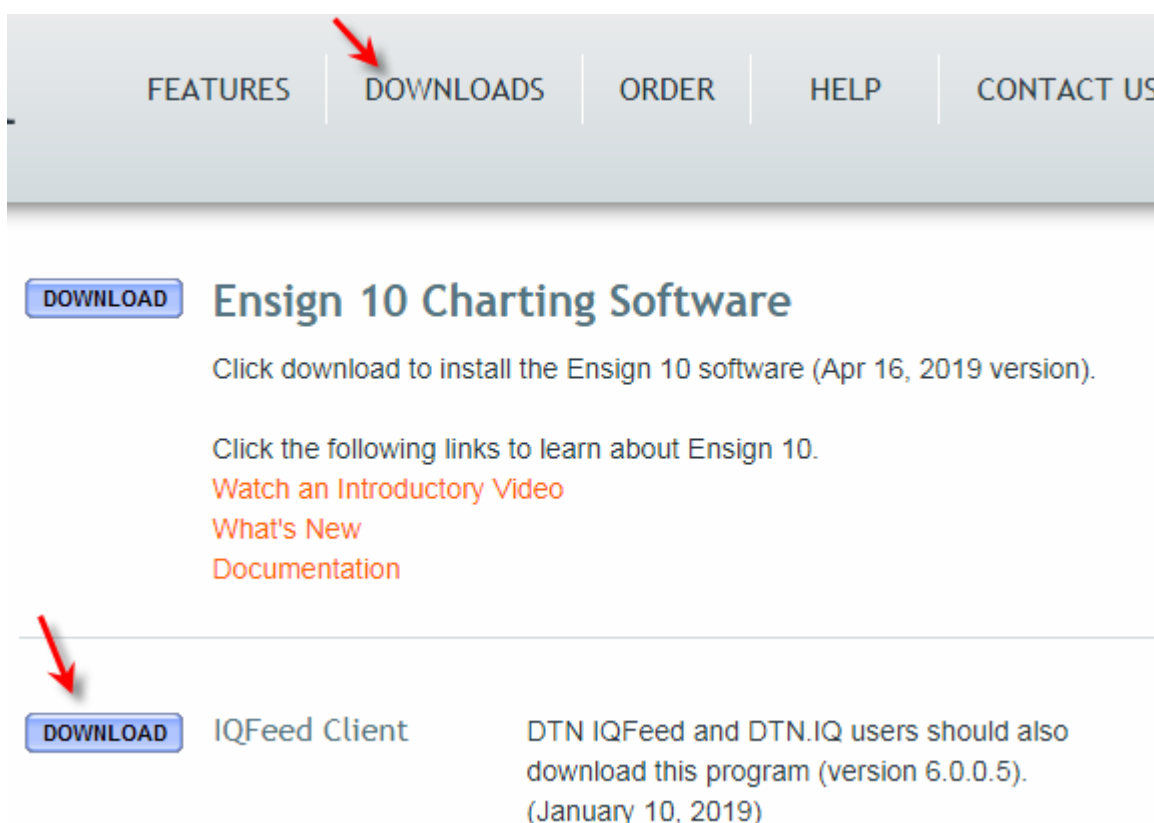
Continuation symbol format is the root symbol, and #. Example: @ES#.

Index symbols have a suffix, such as .X. Example: INDU.X

Historical refresh for ticks, intra-day bars, daily, weekly and monthly data is available from IQFeed.
Refresh from charts or from the Database Manager to download the history.

IQFeed Download Instructions

- You will need to download and install both the IQFeed software and Ensign 10.
- Click the IQFeed button on the Downloads page on Ensign's web site to start the download.



FEATURES | **DOWNLOADS** | ORDER | HELP | CONTACT US

DOWNLOAD Ensign 10 Charting Software

Click download to install the Ensign 10 software (Apr 16, 2019 version).

Click the following links to learn about Ensign 10.

- [Watch an Introductory Video](#)
- [What's New](#)
- [Documentation](#)

DOWNLOAD IQFeed Client

DTN IQFeed and DTN.IQ users should also download this program (version 6.0.0.5). (January 10, 2019)

- The browser will ask 'Would you like to open the file or save it to your computer?'
- Click the 'Open' button. The download will proceed.
- When the download is finished, the installation will start. Proceed through the installation.
- Warning: The IQFeed application MUST be installed in folder C:\Program Files\DTN\IQFeed
- When Ensign 10 runs, it will automatically start the IQFeed software.

- The first time IQFeed runs you will have to enter your IQFeed account and password.
- If you are installing an upgrade of IQFeed, please uninstall the older IQFeed version first.

watch video » [Setup IQFeed](#)

IQFeed Features

IQFeed is a streaming Internet data feed with quotes and news for US, Canadian and foreign exchanges. Imagine, real-time data from DTN Market Data combined with the powerful Ensign 10 software to help you find those intra-day profit opportunities.

- Mix delayed and real-time data. Access to all data in delayed mode for Equities, Futures, and Options. Delayed data can be upgraded to real-time by paying the exchange fees.
- Daily data history refresh from 2001.
- Intra-day data history refresh for last 8 months!!!!
- Tick data refresh for last 8 calendar days.
- Nasdaq Level II available.
- Options model with options chains for stocks, indexes, and futures.
- Extensive news services available.
- Access to all US Equity and Commodity exchanges, Canadian Stocks, all major Indices, Eurex, EuroNext, LIFFE, LCE, LME, Simex and Single Stock Futures.

Futures Symbols

SYM	CONTRACT NAME	EXCH	:	SYM	CONTRACT NAME	EXCH
3YR	3-Year T-Note	CBOT	:	@RMF	Mini Russell 1000	ICEFU
@AB	Western Barley	ICEFUC	:	@RP	Euro/British Pound	CME
@AC	Ethanol	CBOT	:	@RR	Rough Rice	CBOT
@ACD	Australian \$/Canadian	CME	:	@RS	Canola	ICEFUC
@ACX	Synthetic OTC Ethanol	CBOT	:	@RU	Russian Ruble	CME
@AD	Australian \$	CME	:	@RY	Euro/Japanese Yen	CME
@AE	DJ Aig Exc Return Idx	CBOT	:	@RZ	Euro/Swiss Franc	ICEFU
@AJY	Aust \$/Japanese Yen	CME	:	@S	Soybeans	CBOT
@ANE	Aust \$/New Zealand \$	CME	:	@SA	5 Yr Int Rate Swap	CBOT
@AR	Aust \$/New Zealand \$	ICEFU	:	@SAX	5 YR Int Rt Swap Imp Y	CBOT
@AS	Aust \$/Canadian \$	ICEFU	:	@SB	Sugar #11	ICEFU
@AU	Aust \$/US\$	ICEFU	:	@SD	San Diego Home Price I	CME
@BF	British Pd/Swiss Franc	ICEFU	:	@SE	Sugar #14	ICEFU
@BIO	E-Mini Nasdaq Biotech	CME	:	@SEK	Swedish Krona	CME
@BO	Soybean Oil	CBOT	:	@SF	Swiss Franc	CME
@BP	British Pound	CME	:	@SG	S&P 500/Growth	CME
@BR	Brazilian Real	CME	:	@SJY	Swiss Franc/J.Yen	CME
@BT	Boston Home Price Idx	CME	:	@SM	Soybean Meal	CBOT
@C	Corn	CBOT	:	@SMC	E-Mini S&P SmlCap 600	CME
@CB	Cash-Settled Butter	CME	:	@SMP	S&P Small Cap 600	CME
@CC	Cocoa	ICEFU	:	@SN	SM US\$/Japanese Yen	ICEFU

@CD	Canadian Dollar	CME	:	@SP	S&P 500	CME
@CH	Chicago Home Price Idx	CME	:	@SP5	E-Mini S&P Asia 50 Idx	CME
@CI	Continuous Comm Idx	ICEFU	:	@SPY	S&P Depositary Receipt	CME
@CJY	Canadian \$/Japanese Ye	CME	:	@SR	10 Yr Int Rate Swap	CBOT
@CKO	Czech Koruna	CME	:	@SRX	10 Yr Int Rt Swp Imp Y	CBOT
@CR	RJ CRB Index	ICEFU	:	@SU	S&P 500/Value	CME
@CT	Cotton	ICEFU	:	@SV	SM US\$/Canadian \$	ICEFU
@CU	Composite Home Price I	CME	:	@TB	T-Bill	CME
@DA	Class III Milk	CME	:	@TBX	BXY Trakrs Idx	CME
@DC	Wash DC Home Price Idx	CME	:	@TEC	Technology Spctr	CME
@DD	\$25 DJ Futures	CBOT	:	@TFS	Mini Russell 2000	ICEFU
@DE	Denver Home Price Idx	CME	:	@TU	T-Note 2 Yr	CBOT
@DJ	Dow Jones Ind Avg	CBOT	:	@TY	T-Note 10 Yr	CBOT
@DK	Class IV Milk	CME	:	@US	T- Bond	CBOT
@DX	US Dollar Index	ICEFU	:	@USX	CME\$Index	CME
@DY	CME Dry Whey	CME	:	@VC	US\$/Czech	ICEFU
@E	Euro Index	ICEFU	:	@VM	CBOE mini-VIX	CFE
@EAD	Euro FX/Australian \$	CME	:	@VU	US\$/Hungary	ICEFU
@ECD	Euro FX/Canadian Dolla	CME	:	@W	Wheat	CBOT
@ECZ	Euro/Czech Koruna	CME	:	@WP	NBSK Pulp	CME
@ED	Eurodollar	CME	:	@YA	Aust\$/Yen	ICEFU
@EED	E-Mini Eurodollar	CME	:	@YC	Mini Corn	CBOT
@EFE	E-Mini MSCI EAFE Idx	CME	:	@YK	Mini Soybeans	CBOT
@EHU	Euro/Hungarian Forint	CME	:	@YM	Mini DJ \$5	CBOT
@EJ	EuroYen	CME	:	@YW	Mini Wheat	CBOT
@EM	Libor	CME	:	@YZ	Euro/SA Rand	ICEFU
@EMD	E-Mini S&P Mid-Cap 400	CME	:	@ZJ	New Zealand\$/Yen	ICEFU
@EME	E-mini S&P 500 Euro	CME	:	@ZR	US\$/SA Rand	ICEFU
@EMI	E-Mini MSCI Emrg Mkts	CME	:	@ZX	New Zealand\$/US\$	ICEFU
@ENK	Euro FX/Norweigan Kron	CME	:	@ZY	Swiss Franc/J.Yen	ICEFU
@EO	Euro/US\$	ICEFU	:	AD	Australian Dollar	CME
@EP	Euro/Canadian\$	ICEFU	:	AL	Aluminum	COMEX
@EPL	Euro/Polish Zloty	CME	:	BH	Heating Oil Financial	NYMEX
@ES	E-Mini S&P 500	CME	:	BO	Soybean Oil	CBOT
@ESK	Euro FX/Swedish Krona	CME	:	BP	British Pound	CME
@EU	Euro FX	CME	:	BR	Brazilian Real	CME
@EY	Euro/Japanese Yen	ICEFU	:	C	Corn	CBOT
@EZ	Euro/Czech	ICEFU	:	CD	Canadian Dollar	CME
@FF	30 Day Fed Funds	CBOT	:	CKO	Czech Koruna	CME
@FR	SF Home Price Idx	CME	:	CL	Crude Oil	NYMEX
@FS	S&P Fncl Spctr	CME	:	DA	Class III Milk	CME
@FV	T-Note 5 Yr	CBOT	:	DB	Butter Grade AA	CME
@FXN	E-Mini FTSE/XINHUA CHI	CME	:	DJ	Dow Jones Ind Avg	CBOT
@FZ	Frost Index	CME	:	DK	Class IV Milk	CME
@FZE	OTC Ethanol Fwd Mth Sw	CBOT	:	ECZ	Euro/Czech Koruna	CME

@GB	Euro/British Pound	ICEFU	:	ED	Eurodollar	CME
@GCB	OTC Ethanol Gulf C Bas	CBOT	:	EL	EuroYen Libor	CME
@GF	Feeder Cattle	CME	:	EM	Libor	CME
@GI	S&P GSCI	CME	:	EU	Euro FX	CME
@GIE	S&P GSCI Excess Return	CME	:	EY	EuroYen	CME
@GN	British Pd/NZ\$	ICEFU	:	FC	Feeder Cattle	CME
@GP	Deliverable Nonfat Dry	CME	:	FF	30 Day Fed Funds	CBOT
@HE	Lean Hogs	CME	:	FS	5 Yr Int Rate Swap	CBOT
@HFO	Hungarian Forint	CME	:	FV	T-Note 5 yr	CBOT
@HI	Eurozone HICP	CME	:	GC	Gold	COMEX
@HRC	Hot Rolled Steel	NYMEX	:	GI	Goldman Sachs Idx	CME
@HRE	Euro/Hungary	ICEFU	:	HC	Heating Oil/Crude	NYMEX
@HY	Canadian\$/JY	ICEFU	:	HFO	Hungarian Forint	CME
@IC	National Corn Index	MGE	:	HG	Copper	COMEX
@IH	Hard Red Winter Index	MGE	:	HH	Natural Gas Fd Fncl	NYMEX
@IL	Israeli Shekel	CME	:	HO	Heating Oil	NYMEX
@IP	Hard Red Spring Wheat	MGE	:	HP	Natutual Gas Pd Fncl	NYMEX
@IS	National Soybean Index	MGE	:	JBY	Japanese Gov Bond	CME
@IW	Soft Red Winter Wheat	MGE	:	JY	Japanese Yen	CME
@IWM	Ishares Russell 2000	CME	:	KW	Wheat K.C. HRW	KCBT
@JE	E-Mini Japanese Yen	CME	:	LB	Lumber	CME
@JY	Japanese Yen	CME	:	LC	Live Cattle	CME
@KC	Coffee	ICEFU	:	LH	Lean Hogs	CME
@KJ	Swedish Krona/Yen	ICEFU	:	MD	S&P Mid-Cap 400	CME
@KRW	Korean Won	CME	:	MW	Spring Wheat	MGE
@KW	Wheat	KCBT	:	ND	NASDAQ 100	CME
@KXD	US\$/Swedish Krona	ICEFU	:	NE	New Zealand \$	CME
@KY	Nor Krone/Yen	ICEFU	:	NF	NonFat Dry Milk	CME
@LA	LA Home Price Idx	CME	:	NG	Natural Gas	NYMEX
@LAB	OTC Ethanol LA Basis	CBOT	:	NK	Nikkei 225	CME
@LE	Live Cattle	CME	:	NZ	30 Yr Int Rate Swap	CBOT
@LV	LV Home Price Idx	CME	:	O	Oats	CBOT
@MD	S&P Mid-Cap 400	CME	:	PA	Palladium	NYMEX
@ME	E-Mini Euro FX	CME	:	PB	Pork Bellies	CME
@MF	SM US\$/Swiss Franc	ICEFU	:	PL	Platinum	NYMEX
@MI	Miami Home Price Idx	CME	:	PLZ	Polish Zloty	CME
@MP	SM British Pound/US\$	ICEFU	:	PN	Propane	NYMEX
@MV	Value Line	KCBT	:	PX	Mexican Peso	CME
@MW	Spring Wheat	MGE	:	QAL	Aluminum	NYMEX
@ND	NASDAQ 100	CME	:	QAX	Nymex Ardour Glbl Idx	NYMEX
@NE	New Zealand \$	CME	:	QBB	Brent Financial	NYMEX
@NF	Non-Fat Dry Milk	CME	:	QBH	Heating Oil Financial	NYMEX
@NIY	Nikkei 225 Yen	CME	:	QCJ	Cocoa	NYMEX
@NJ	Nor Krone/Swed Krona	ICEFU	:	QCL	Crude Oil	NYMEX
@NKD	Nikkei 225	CME	:	QGC	Gold	NYMEX

@NOK	Norweigan Krone	CME	:	QHG	Copper	NYMEX
@NQ	E-Mini Nasdaq 100	CME	:	QHO	Heating Oil	NYMEX
@NT	US\$/Nor Krone	ICEFU	:	QJM	PJM Electricity	NYMEX
@NY	NY Home Price Idx	CME	:	QKT	Coffee	NYMEX
@NYB	OTC Ethanol NY Hbr Bas	CBOT	:	QNG	Natural Gas	NYMEX
@NZ	30 Yr Int Rate Swap	CBOT	:	QPA	Palladium	NYMEX
@O	Oats	CBOT	:	QPL	Platinum	NYMEX
@OJ	Orange Juice	ICEFU	:	QPN	Propane	NYMEX
@OL	Euro/Nor Krone	ICEFU	:	QRE	Russian Export Crude	NYMEX
@PB	Pork Bellies	CME	:	QSI	Silver	NYMEX
@PC	British PD/Can\$	ICEFU	:	QWS	Crude Oil Financial	NYMEX
@PCT	Pimco CRR Trakrs	CME	:	QXGN	E-mini Gold Kilo	COMEX
@PJY	British Pd/Japanese Ye	CME	:	QXSN	E-mini Silver 1000 oz.	COMEX
@PK	British Pd/Nor Krone	ICEFU	:	QYO	Sugar #11	NYMEX
@PLZ	Polish Zloty	CME	:	RA	So. African Rand	CME
@PS	British Pd/Swed Krona	ICEFU	:	RB	RBOB Gasoline	NYMEX
@PSF	British Pd/Swiss Franc	CME	:	RE	Russian Export Crude	NYMEX
@PST	Pimco Sptr Trakrs	CME	:	RR	Rough Rice	CBOT
@PX	Mexican Peso	CME	:	RU	Russian Ruble	CME
@PY	British Pd/Japanese Ye	ICEFU	:	S	Soybeans	CBOT
@PZ	British Pd/SA Rand	ICEFU	:	SF	Swiss Franc	CME
@QA	British Pd/Aust\$	ICEFU	:	SI	Silver	COMEX
@QC	Miny Copper	COMEX	:	SM	Soybean Meal	CBOT
@QCN	E-Mini Nasdaq Comp	CME	:	SP	S&P 500	CME
@QG	MINY Natural Gas	NYMEX	:	SW0	e-10 Yr Swap Rate	CME
@QH	MINY Heating Oil	NYMEX	:	SW5	e-5 Yr Swap Rate	CME
@QI	Miny Silver	COMEX	:	TS	10 Yr Int Rate Swap	CBOT
@QM	MINY Crude Oil	NYMEX	:	TU	T-Note 2 yr	CBOT
@QO	Miny Gold	COMEX	:	TY	T-Note 10 yr	CBOT
@QQQ	CME PowerShares QQQ	CME	:	US	T-Bond	CBOT
@QU	Miny RBOB Gasoline	NYMEX	:	USX	CME\$Index	CME
@RA	So. African Rand	CME	:	W	Wheat	CBOT
@RAD	Euro/Australian \$	ICEFU	:	WS	Crude Oil Financial	NYMEX
@RB	Chinese Renminbi/US\$	CME	:	XC	Crude MACI Index	NYMEX
@RCI	Rogers Intl Comm Trakr	CME	:	XK	Crude Contango Index	NYMEX
@RE	Chinese Renminbi/Euro	CME	:	YC	Mini Corn	CBOT
@RF	Euro FX/Swiss Franc	CME	:	YK	Mini Soybeans	CBOT
@RI	DJ US RE Index	CBOT	:	YU	NYSE Composite Rvsd	ICEFU
@RK	Euro/Swedish Krona	ICEFU	:	YW	Mini Wheat	CBOT
@RM	Chinese Renminbi/Yen	CME	:			