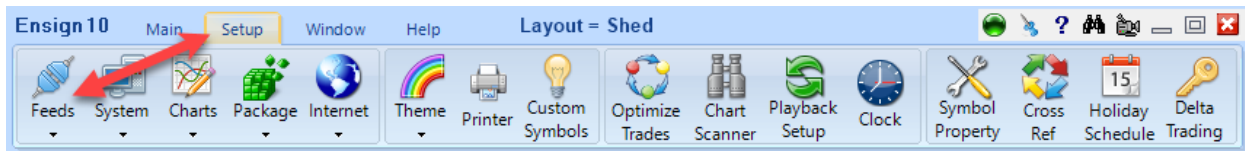


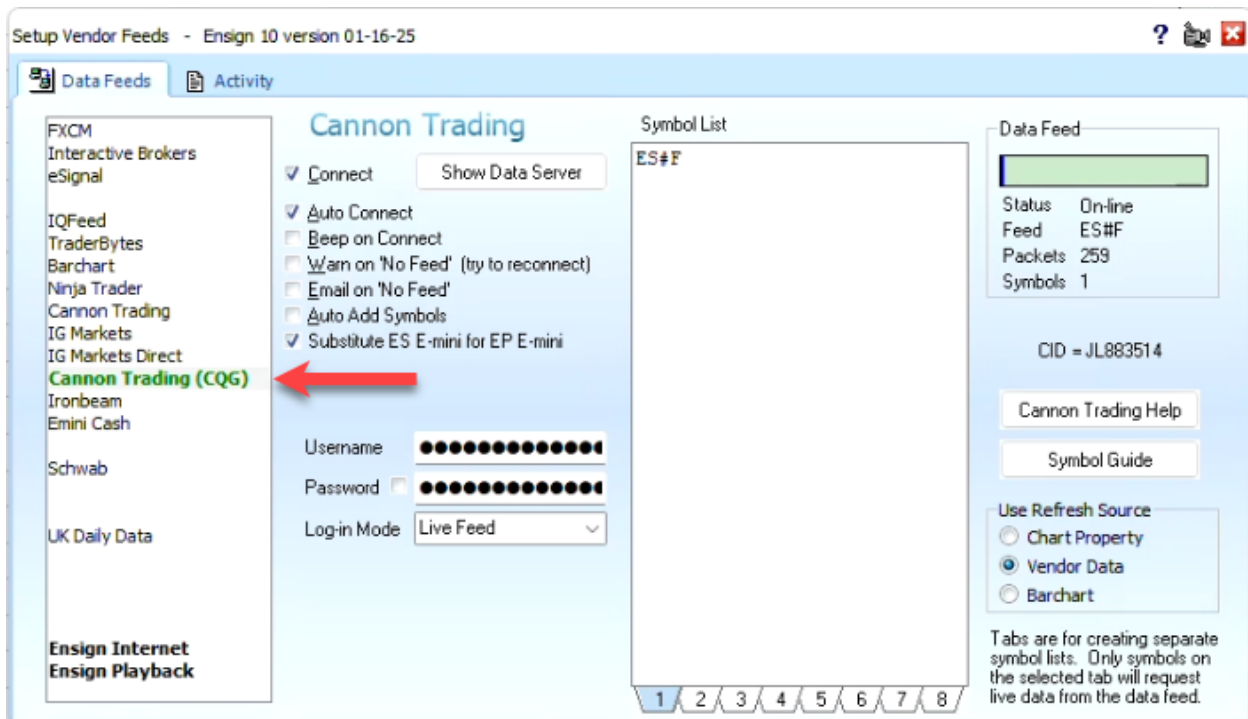
Cannon Trading CQG

Note: You will need to have received an email from CQG in order to connect Ensign to the CQG data feed. You will also need to have an API for Dual Connectivity for your account.

Click Setup | Feeds to display the Setup Vendor Feeds window.



Use this window to connect the CQG data feed to Ensign by following the steps below.



1. Select 'Cannon Trading CQG' on the left.
2. Use the drop-down box to select the 'Login Mode' you will be using to connect the CQG data feed to Ensign (Demo Feed or Live Feed).
3. Enter your CQG 'User Name' (email address) and 'Password' using Case Sensitive characters (use the checkbox next to 'Password' to show the entries).
4. Type the symbols you will be watching into the 'Symbol List' using CAPITAL LETTERS (ES#F is the Emini S&P continuation contract).

5. Check the 'Auto Connect' and 'Connect' check boxes (after a few seconds green will appear in 'Data Feed' box with a small amount of blue showing you are now connected).

Note: 'Cannon Trading CQG' on the left will show in Red if an incorrect User Name or Password was entered. Uncheck the 'Connect' box and re-enter the correct User Name (email address) and Password, then re-check the 'Connect' box to connect.

Related Links

[CQG Symbol Guide](#)

[Quote](#)

[Chart](#)

[Feeds Overview](#)