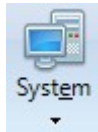


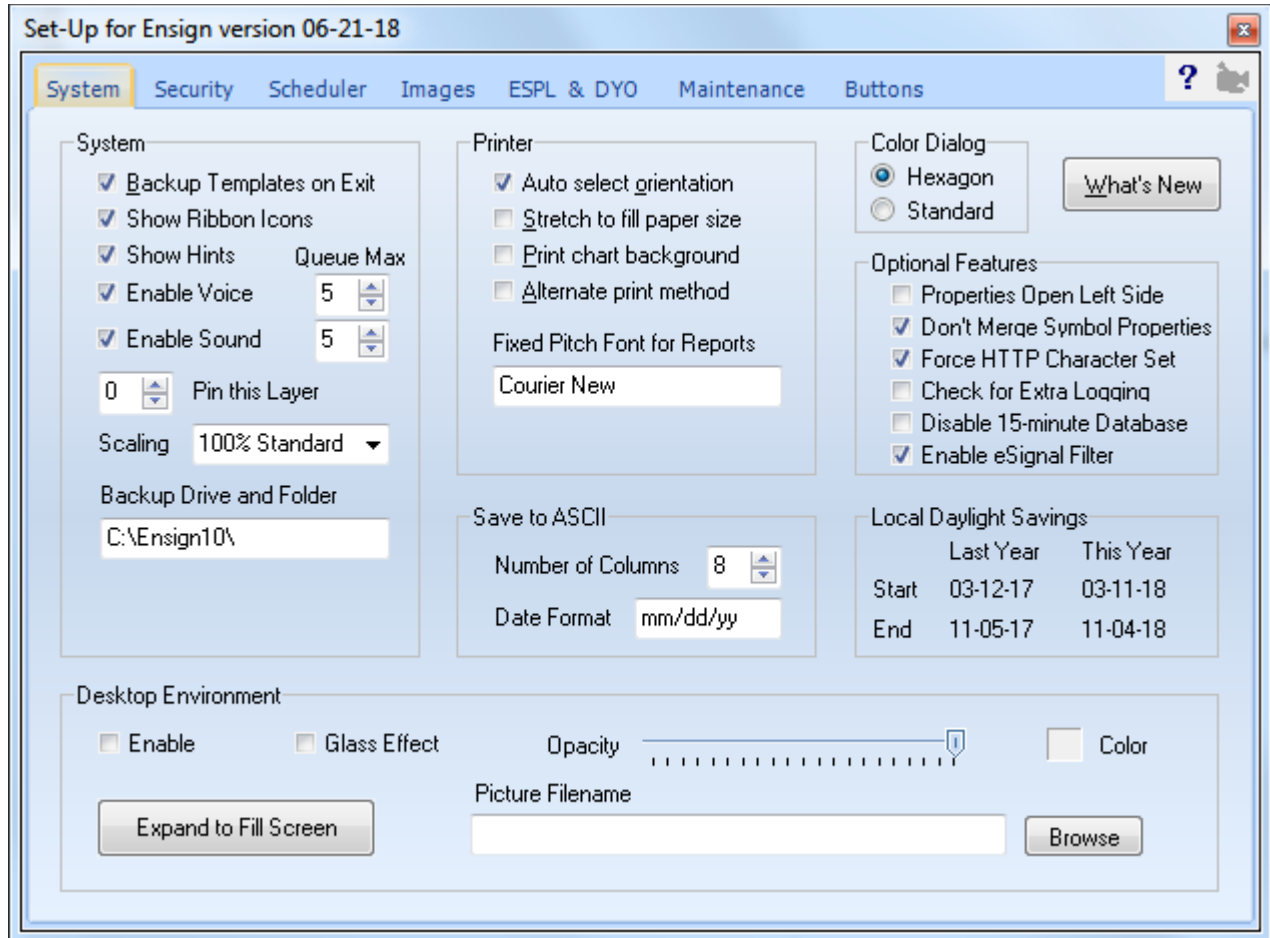
System



Click the Setup | System button to view and configure system settings.

System

Select the System tab to view and edit the System settings.



System

Backup Templates on Exit – Eight folders are backed-up to the \AutoBackup folder when the program exits. A folder is made for each day of the week, and contains the folders and their sub-folder shown in the red frame. The location uses the path entered in the Backup Drive and Folder edit box. The default is the program's folder of C:\Ensign10\.

Show Ribbon Icons – Show or hide the icons on the Ribbon.

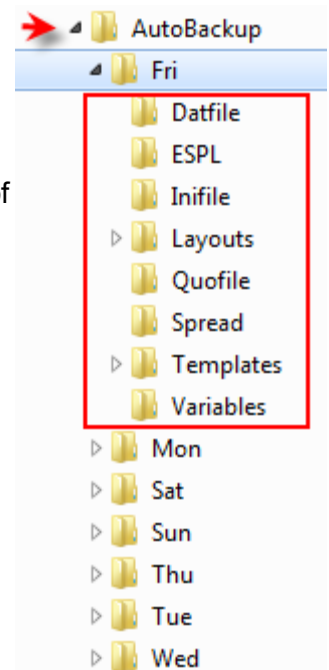
Show Hints – Show or hide Hints in the program.

Enable Voice – Enable or Disable computer voice confirmation for some program actions. Use Queue Max to limit the depth of the queue of voice messages waiting to be played. When the queue is full, new voice messages are discarded.

Enable Sound – Enable or Disable alert sounds. Use Queue Max to limit the depth of the queue of sounds waiting to be played. When the queue is full, new sounds are discarded.

Pin this Layer – Causes all open windows from the indicated Layer (1 through 9) to Show in all other Layers.

Scaling – Use this drop down box to match the operating system's font enlargement property. Ensign 10 needs to know the enlargement factor to correctly locate the top left corner and size of forms for printing.



Printer

Auto select orientation – The program will print in either Landscape or Portrait mode (which ever is the best fit).

Stretch to fill paper size – Print the window or form using the screen proportions, and fill the printed page.

Print chart background – Uncheck this box to print charts using a white background (conserves ink and toner).

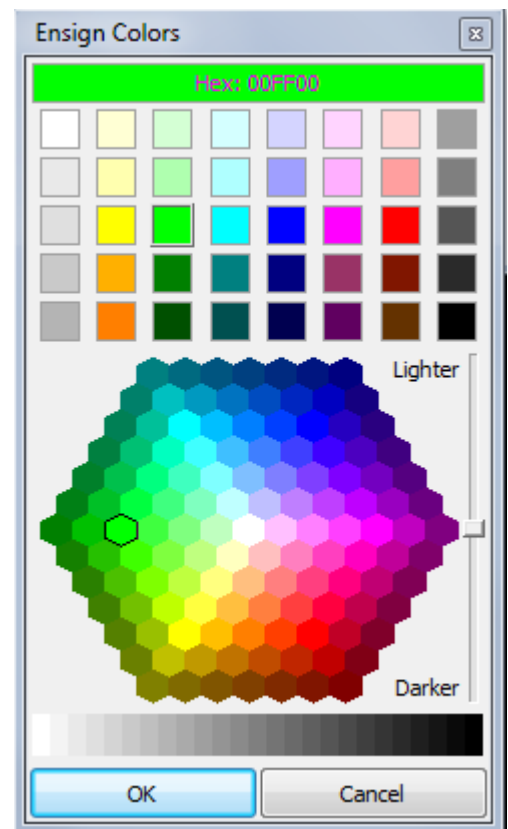
Alternate print method – Prints screens using the Form method.

Fixed Pitch Font for Report – Reports are printed in a fixed pitch font, which you can specify in the entry box.

Color Dialog

The color dialog box used to select colors in Ensign can be either the Standard dialog form or Ensign's Hexagon style form.

Select the style that you prefer for making color choices.



What's New Button

Click the What's New button to open and display the Ensign What's New page on the web.

Optional Features

Place a check mark next to a recently added feature, if instructed to do so by software support. This will enable the feature. Some features are added for testing ahead of a general release while a new feature is developed.

Save to ASCII

Ensign allows you to save quote pages, options pages, and the Top 100 list to an ASCII file. View the Save To File documentation for details. The settings in this panel specify the Number of Columns to save from the page, and how to format the date in the file.

Local Daylight Savings

Displays the start and end dates for daylight savings time.

Desktop Environment

Enable – Place a check mark in this box to enable a Multi-Document Interface (MDI program) emulation. A program desktop frame will appear below the Ribbon and can be used to contain charts and other windows. When the Cascade, Tile Vert., and Tile Horz. buttons are clicked on the Window tab, all windows that are inside of the desktop frame will be arranged inside the frame. The program desktop frame can be sized by dragging the frame edge.

Note: Moving the Ribbon to a different location on the screen will also drag the desktop frame and its child windows. When the Desktop Environment is disabled, the Cascade, Tile Vert., and Tile Horz. buttons will arrange windows using a monitor's work area minus the space used by the Ensign Ribbon, and moving the location of the Ribbon will not reposition other windows.

Expand to Fill Screen – Click this button to expand the program desktop frame to fill the screen.

Glass Effect – This is a variation of the opacity of the frame. Enter a high opacity value and then check this box.

Opacity – This setting allows you to see through desktop frame. Slide the pointer rightward to make the desktop frame more opaque (solid). Slide the pointer leftward to permit screen images beneath the desktop frame area to show through.

Color – Specify the background color of the desktop frame area.

Picture Filename – Optionally browse for and select a .jpg graphics file from the C:\Ensign10\Background folder to display a picture on the desktop frame background.

Security

Select the Security tab to display the Security screen. The Ensign ID identifies your system and is needed on the Order Form to start a subscription to Ensign. The Ensign ID is different on every computer. On request, Ensign Software can authorize multiple computers for you (at no additional cost) as long as they are not used at the same time. Note: If you reformat your hard disk, or reinstall the operating system, then the Ensign ID will change to a different value. In this case, contact Ensign and provide the new Ensign ID, otherwise the software will expire.

The screenshot shows the 'Set-Up for Ensign version 04-23-19' window with the 'Security' tab selected. The Ensign ID is FW969628. The Security status is Subscriber. The Dates panel shows installation on 12-04-18 and last used on 04-24-19. The Authorization panel shows a query on 04-24-19 13:46 and a reply on 04-24-19 13:46. The Run Password section is optional and currently empty.

Dates	
Installed	12-04-18
Data Feed	12-11-18
Program Version	04-23-19
Last Used	04-24-19

Security	
Status	Subscriber
CID	PX969628
NID	F76F4-R3W/G5

Authorization	
Query	04-24-19 13:46
Counter	1 + 0
Reply	04-24-19 13:46
Counter	1 + 0
Level	S + S1
Add-on	Trendsignal Admin

Run Password (Optional)
Enter a Password ONLY if you want to prevent others from using Ensign.
If this security feature is used, you will have to enter this password to run Ensign.

Status

The Status box should display 'Subscriber', 'Paid', or 'Trial'. If the Status box shows 'Expired' then call Ensign Billing at 208-552-2230 or call Ensign Software Support at 801-328-1382. NOTE: New users have a 7-day trial period to use the software, before an order must be placed.

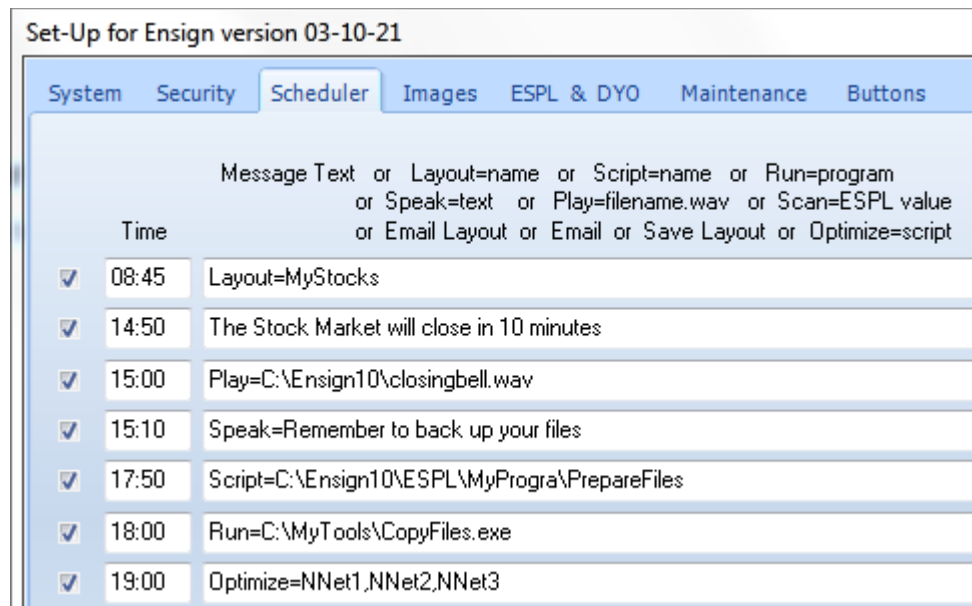
The 'Dates' panel displays the original installation date, the date that the data-feed was first detected, the Program Version date, and the date the software was Last Used. A 'Enter Activation Code' button is used to enter security passwords provided by Ensign Software Support. Contact Ensign Billing with questions or problems regarding the software security.

Run Password

An optional personal password may be entered to protect the Ensign 10 program from being used by others. If a password is entered, then this password must be entered at a prompt to successfully run the Ensign 10 program. Call Ensign Software Support if you forget your personal password.

Scheduler

Select the Scheduler tab to display the Scheduler screen.



The scheduler is used to trigger an event at a specified time. The program can display a Text message on the screen, open a Layout, run an ESPL script, Run a program on your computer, Speak some text, or Play a .wav sound file. Several examples are shown above. Place a check mark in the left-side box to enable the scheduled event. Enter a local time in the Time column to specify when the event should occur (ex. 09:30, 15:10). The local time is obtained from the computer's system clock which may differ from the time zone selected for a chart's grid.

Note: If a time is entered with only the minutes (and not the hour), then the scheduler will trigger every hour. For example, an entry of :05 will trigger the event every hour at 5 minutes past the hour (24 hours a day).

Message: A message box will open and display the entered Text message at the specified time.

Layout: Enter a Layout name to open at the Time. Example: Layout=MyStocks

Script: Enter an ESPL project file to run. Example, Script=C:\Ensign10\ESPL\MyProgram\Recalc
Specify the full path to the project file. The ESPL variable can be assigned a value by adding the value to the end of the file name separated by a space character.
Example:\Recalc 2

Run: Enter the name of an external program to run at the Time. Run=C:\myprocess.exe

Rerun: This command will exit and rerun Ensign 10 without saving any changes to a layout.

Speak: A computer voice will say the entered Text at the specified Time. Example: Speak=Hello

Play: Enter the name of a sound file that will be played at the Time. Play=C:\trumpet.wav

Scan: Open the Chart Scanner and run the ESPL Script. The optional parameter sets the ESPL value.

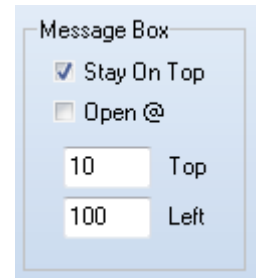
Optimize: Open the Optimize Trades form, and execute the Optimizer Control File(s). The example shows 3 control files separated by commas. Each control file will be execute in turn.

Message Box

Properties are present to control the display of the Message Box.

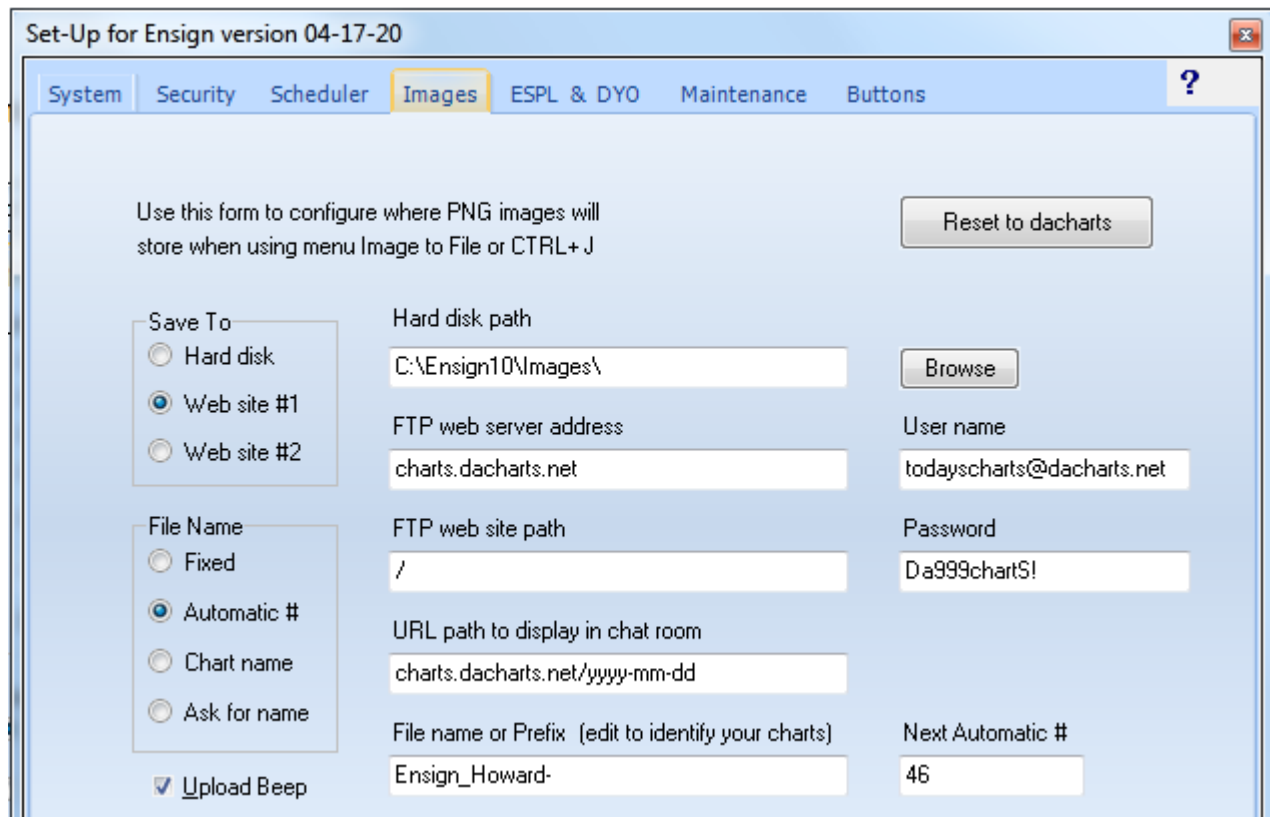
Stay On Top – When checked the Message Box will be a top surface form.

Open @ – When checked the Message Box will open at the provided Top and Left pixel coordinates instead of being displayed at screen center.



Images

Select the Images tab to display the Images setup screen.

A screenshot of the 'Set-Up for Ensign version 04-17-20' dialog box, with the 'Images' tab selected. The dialog has a title bar with the version number and a close button. Below the title bar are several tabs: 'System', 'Security', 'Scheduler', 'Images' (highlighted), 'ESPL & DYO', 'Maintenance', and 'Buttons'. A help icon (?) is in the top right corner. The main area contains the following fields and controls:

- Instruction: 'Use this form to configure where PNG images will store when using menu Image to File or CTRL+J'. A 'Reset to dacharts' button is to the right.
- 'Save To' section with radio buttons: 'Hard disk', 'Web site #1' (selected), and 'Web site #2'.
- 'File Name' section with radio buttons: 'Fixed', 'Automatic #' (selected), 'Chart name', and 'Ask for name'.
- 'Upload Beep' checkbox, which is checked.
- 'Hard disk path' text box containing 'C:\Ensign10\Images\'. A 'Browse' button is to the right.
- 'FTP web server address' text box containing 'charts.dacharts.net'.
- 'FTP web site path' text box containing '/'. A 'User name' text box containing 'todayscharts@dacharts.net' is to the right.
- 'URL path to display in chat room' text box containing 'charts.dacharts.net/yyyy-mm-dd'. A 'Password' text box containing 'Da999chartS!' is to the right.
- 'File name or Prefix (edit to identify your charts)' text box containing 'Ensign_Howard-'. A 'Next Automatic #' text box containing '46' is to the right.

Ensign has the ability to save a Chart as a graphics file. Quote pages, News pages, and Properties windows can also be saved as graphics files. The files can either be saved locally on the hard disk, or automatically uploaded to a web site. For example, press CTRL-J on the keyboard while viewing a chart to save the chart to a file. The file will save to the location specified on the Images setup screen. Save Quote pages and News windows by first selecting the window and then selecting the Window tab, and then the Image To | Ensign Server menu.

You can save a Properties window as a graphic file by pressing CTRL-J when the OK button (on the Properties window) has the focus (indicated by the dotted rectangle on the button). If necessary, press the tab key on the keyboard multiple times to move the focus to the OK button.

Printing Graphic files: If you plan on printing a chart graphics file, you may want to change the chart colors to a printer-friendly color scheme before saving the file. Otherwise the printed copy may have a dark background (that wastes printer ink or toner, and makes it hard to see the chart). Press CTRL-K on the keyboard to change the color scheme of a chart to a printer-friendly color scheme. The printer-friendly color scheme has a white background and black font color.

Save To - Select either Hard Disk or a Web site as the Save To location. Select Web site #1 to enter FTP settings for a 1st web site. Select Web site #2 to optionally enter settings for a 2nd web site. This allows you to upload to site #1, then optionally save to site #2 if desired. Note: Many Ensign users use the www.dacharts.com web site to upload and share chart images using the default parameters on the Images setup screen. If desired, you can change the settings and upload to any web site that you have FTP access to.

File Name - The File Name panel is used to specify the format of the file name. There are 4 different file name formats to choose from.

Fixed - Uses the 'File name or Prefix' entry as the file name every time. It will overwrite a previously saved copy.

Automatic # - Uses the 'File name or Prefix' entry, plus an incrementing number for each time that you press CTRL-J. Enter a unique 'File name or Prefix' for use with the Automatic # selection (like TraderJoe-). The file name will change and increment each time that you save a chart, for example, TraderJoe-1.png, then TraderJoe-2.png, etc. Edit the 'Next Automatic #' entry box if you need to reset the incrementing number.

Chart Name - Uses the Chart name as the file name. Note: If you save the same chart several times each day, the previously saved graphics file will be overwritten each time (since it always has the same file name).

Ask for name – You will be prompted to type a file name each time you save a chart image by pressing CTRL-J.

Upload Beep – Place a check mark in the 'Upload Beep' box to play a Beep sound when the save is completed.

Hard Disk Path – Enter the folder on the hard disk where graphics files will be saved. This is the folder where the graphics files will be saved if you have 'Hard Disk' selected as the 'Save To' selection.

FTP web server address - Specifies the URL or IP address of the web site where the FTP upload will save the graphics file to (Example: charts.dacharts.net).

FTP web site path - Specifies the FTP folder on the web site where the file will be saved (Example: 2012-03-20).

URL Path - The 'URL path to display in chat room' box allows you to specify a URL path when posting a screen capture in the Ensign Chat rooms. The URL path for the www.dacharts.com web site will automatically update in Ensign Windows. This is necessary since there is a new folder used for each new day. Click the 'Reset to dacharts' button to return the entries to the installation defaults. This will automatically change the settings to be able to upload to the 'dacharts' web site. This site hosts most of the customer uploads for Ensign.

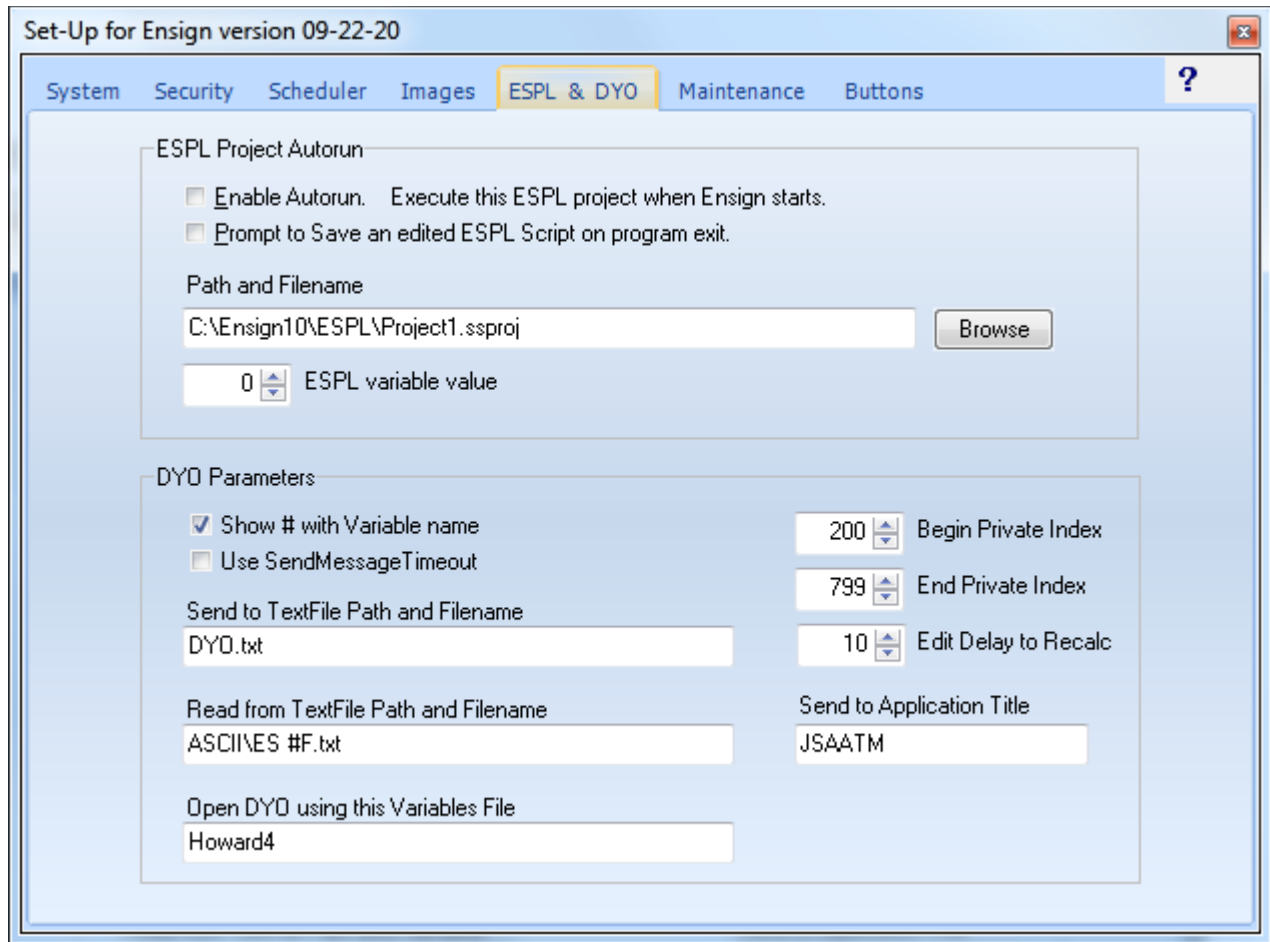
File name or Prefix - Enter the file name that will be used when saving charts (Example: JohnCharts-).

User name and Password – These edit boxes specify the User Name and Password required to log on to the web site FTP server.

Next Automatic # - This entry box allows you to specify or reset the counter that can be optionally added to the file name (when the 'Automatic #' file name format is selected). The counter will start at 1 and increment to 99 before starting over at 1 again.

ESPL

Select the ESPL & DYO tab to display this setup screen.



ESPL Project Autorun

If you want to automatically load and run a particular ESPL program, when the Ensign program runs, then place a check mark in the Enable Autorun box. Enter the Path and Filename where the ESPL project file can be located. Optionally enter the ESPL variable value (that specifies which ESPL procedure to run).

DYO Parameters

Show # with Variable name: Place a check mark in this box to cause the DYO property form to show the index number ahead of the user assigned name. For example, the DYO would show:

10 MyVar := 12 Ave High / 28 Divider	when the box is check, or
MyVar := Ave High / Divider	when the box is unchecked.

Viewing the index values can be helpful when developing a DYO. You may want to uncheck the box when the DYO is finished to see a cleaner reading DYO script.

Use SendMessage Timeout: When checked, the SendMessageTimeOut procedure is called with a 500 millisecond timeout parameter.

Send to TextFile Path and Filename: This parameter is used with the DYO Action statements

if # then TextFile(Message) and if ## then Textfile(#2)

The text from the message will be appended to the specified file.

Read from TextFile Path and Filename: This parameter is used with the DYO Action statement

if #2 then ReadFile(col #3, row #4)

The text from the ASCII file is read. The 1st parameter for col #3 specifies the field to read where fields are separated by commas. The 2nd parameter for row #4 specifies the row in the file to read. The first line is row 1.

When the entries for the Send to TextFile and the Read from Textfile lack a Drive identifier, the program's installation path is added as a prefix. The example of DYO.txt would become C:\Ensign10\DYO.txt.

Open DYO using this Variables File: All DYO's on a chart can default to use the named Variables file. When the entry is blank, a DYO will open with the Variables file what was saved when the DYO form was closed.

Begin Private Index: DYO variables have indexes in the range of 0 to 999. This parameter sets a starting boundary for those variables that will be private to a chart. The suggested default is to begin at index 200.

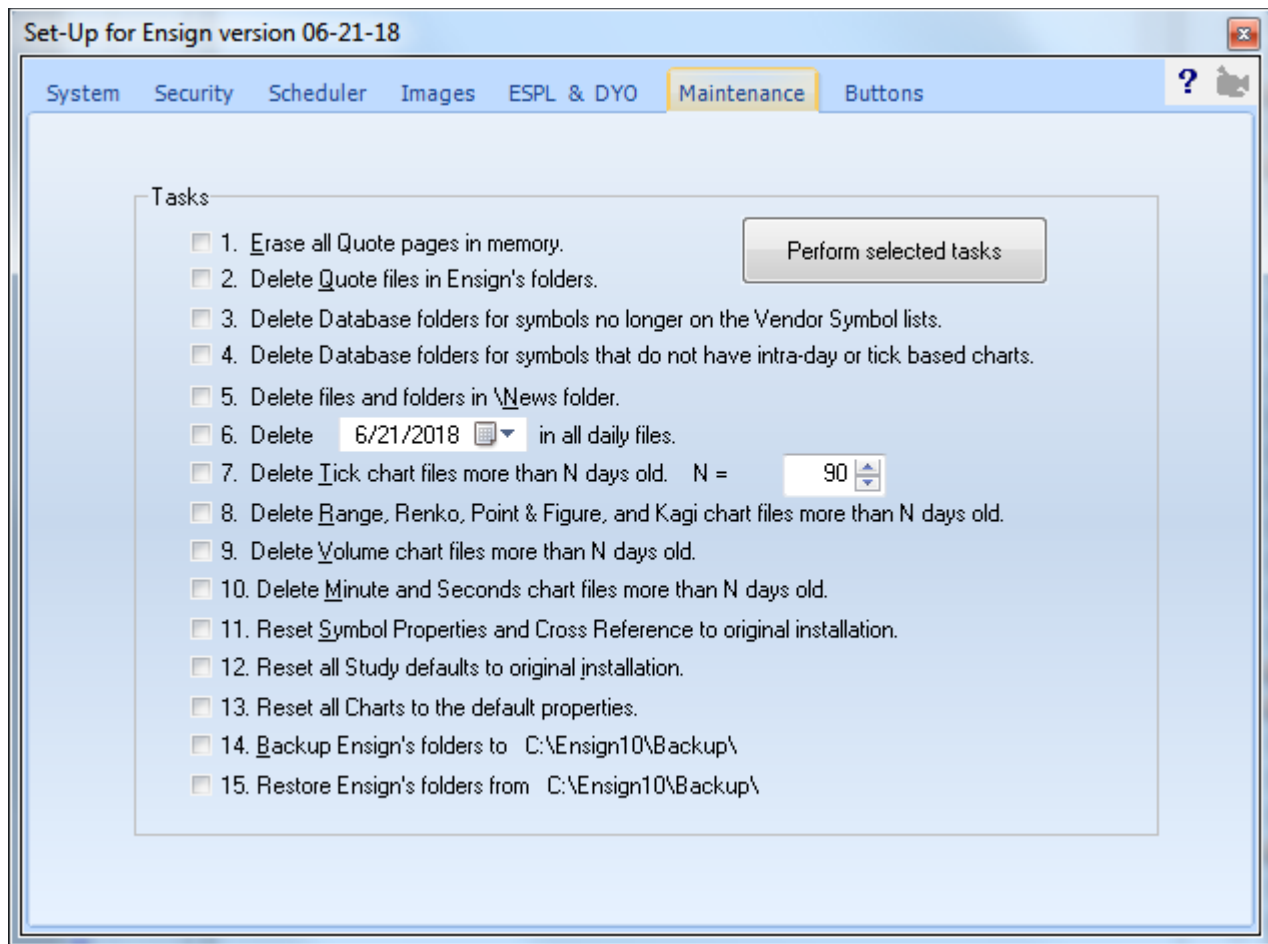
End Private Index: Set the ending boundary for the variables that will be private to a chart. Default is index 399.

Edit Delay to Recalc: Enter the number of seconds delay between the last editing keystroke made on the DYO form, and when the DYO will recalculate. The recommended delay is 10 seconds. The delay can be decreased or increased up to 30 seconds. Enter a value of 0 to disable any recalculation while the DYO form is open. Recalculation of the studies on the chart will occur when the DYO form is closed.

Send to Application Title: This parameter is used with the DYO statement Action | SendKeys(Message) The sendkeys string is sent to another application to control it. This parameter specifies the name of a currently running program that receive the sendkeys. For example, this could be used to trigger a trade in your order entry software.

Maintenance

Select the Maintenance tab to display the Maintenance setup screen.

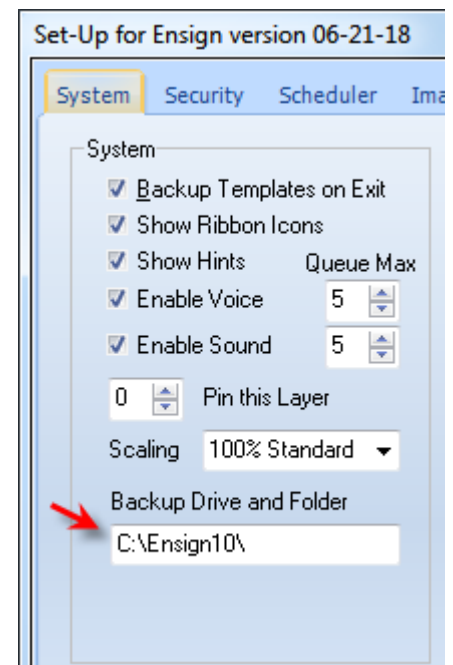


This screen was implemented to assist Ensign Software Support personnel in helping customers with software issues. However, this screen can be used by customers to delete old files and help maintain the software. Place a check mark next to each task that you want to perform, then click the Perform selected Tasks button to execute the request.

1. **Erase all quote tables in memory:** This will clear all the Quote records in RAM memory. This may be useful if the Quote tables have become corrupted. This allows new Quotes to come in and rebuild the quote table.
2. **Delete Quote Files in ENSIGN folder:** This will delete all quote files that are used to store quote information. This may be useful if the quote files have become corrupted and need to be rebuilt again.
3. **Delete Database folder symbols no longer on the Setup | Vendor list:** This will delete tick and intra-day database files when their symbol is not found on any of the Setup | Vendor symbol lists.
4. **Delete Database folder symbols that do not have intra-day or tick based charts:** This will delete tick and intra-day database files for symbols that do not have tick, range, volume, second and minute chart files that need the database files. [read more » Tune-up for Peak Performance](#)
5. **Delete files and folders in News Folder:** This will delete all News story files. This will clean up the hard disk of old News stories or corrupted News story files.

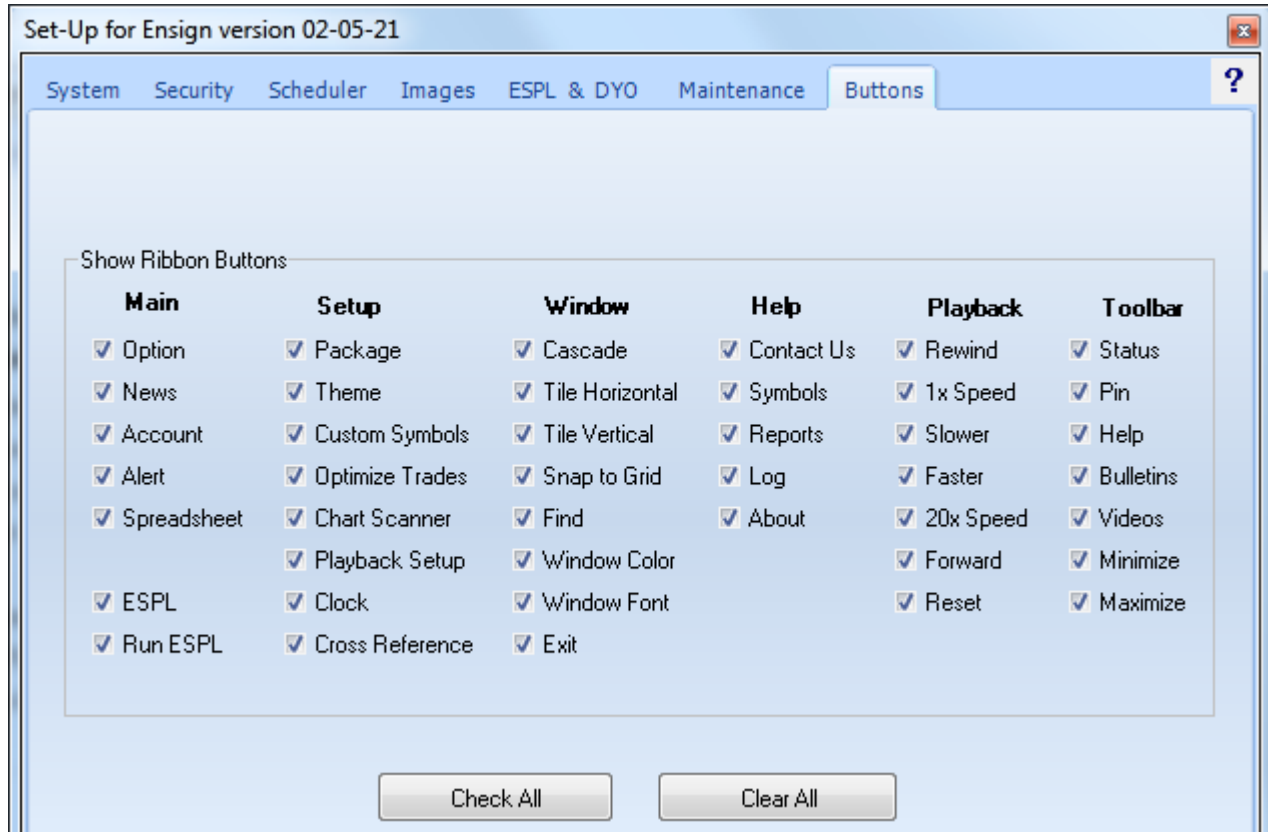
6. **Delete a specific Date in all daily chart files:** Enter a specific date. The bar for that date will be purged from all existing daily chart files. This can be helpful if a bar was accidentally stored on a Holiday or a weekend.
7. **Delete old Tick chart files:** Use this feature to delete old tick chart files from your computer. This can be helpful if a large number of expired charts are taking up room on the hard disk. Enter a value in the entry box. Any chart that hasn't been updated for N days will be deleted.
8. **Delete old Range, Renko, Point & Figure, and Kagi chart files:** Same as above. Only Range, Renko, Point and Figure, and Kagi chart files are deleted.
9. **Delete old Volume chart files:** Same as above. Only Volume chart files are deleted.
10. **Delete old Minute and Seconds chart files:** Same as above. Intra-day chart files are deleted.
11. **Reset Symbol Properties:** Will reset all the Symbol Property entries to their default settings.
12. **Reset Study Defaults:** Will reset the Default setting for all studies (the Default Tab) back to original settings like a new installation. It will not reset Tabs 1 through 14.
13. **Reset all Charts to the Default Properties:** Will cause all charts to be reset to the current default settings.
14. **Backup Ensign Windows:** Will save the entire \Ensign10 folder, chart data, and program files into a backup folder named \Backup. The location for the \Backup folder uses the path entered in the Backup Drive and Folder edit box on the System tab of this Setup form.
15. **Restore Ensign Windows:** Will restore and copy the entire \Backup folder and its sub-folders to the \Ensign10 folder. The location for the \Backup folder uses the path entered in the Backup Drive and Folder edit box on the System tab of this Setup form.

The Backup Drive and Folder can be changed to reference another hard disk, thumb drive, or cloud drive.



Buttons

Select the buttons tab to display the Ribbon Buttons setup screen. This screen allows you to customize which buttons are displayed on the Ribbon tabs, the Playback controls toolbar, and the main form's toolbar.



Place a check mark next to each button that you want displayed. Uncheck any items that you do not use, and thus want to hide the buttons.

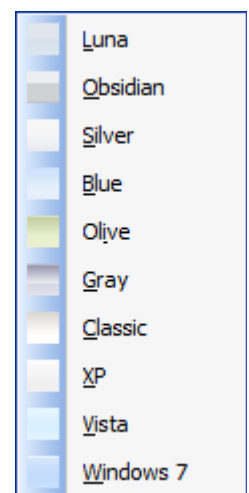
Click the Check All button to place a check mark in every box.

Click the Clear All button to remove the check mark from every box.

Theme



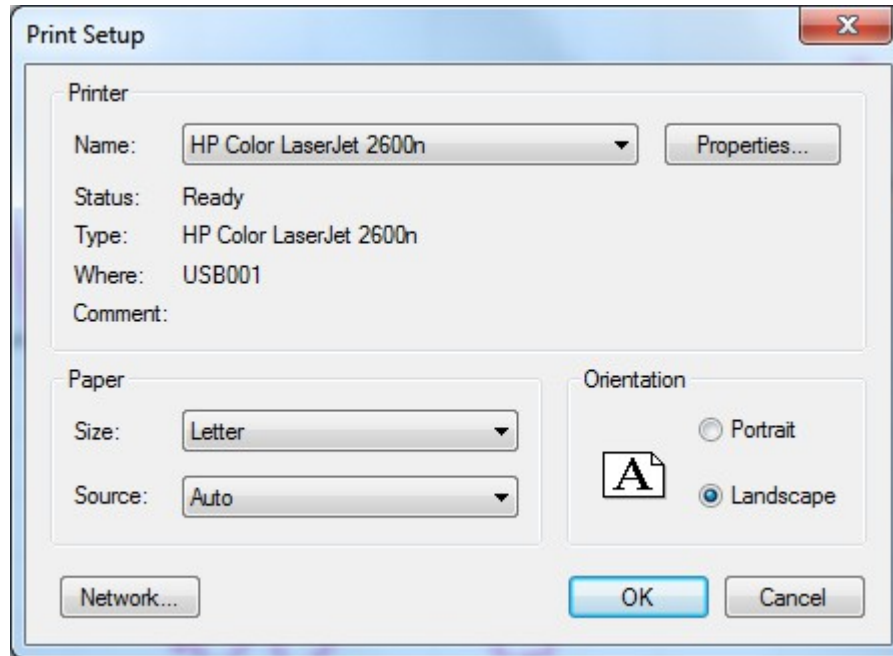
Click the Setup | Theme button to change the color theme of the Ribbon and various forms in the software. The following color themes are available: Luna, Obsidian, Silver, Blue, Olive, Gray, Classic, XP, Vista, and Windows 7.



Printer



Click the Setup | Printer button to view the Print Setup screen. This screen allows you to select a printer and edit its properties. You can also specify the paper size, source, and print orientation.



Clock



Click the Setup | Clock button to open a Clock and Calendar window. The Clock window can be helpful to traders who want to see the time and date, and to view a calendar. It can be a reminder of when the markets will be closing, or a reminder to exit or enter a trade at a specific time of the day. Drag the border of the clock window to display more calendar months, or to minimize the window frame so that just the time is showing. Click the black arrows to scroll through the calendar one month at a time. Click the double-black arrows to scroll one year at a time. Click the X button in the top right corner to close the window.

