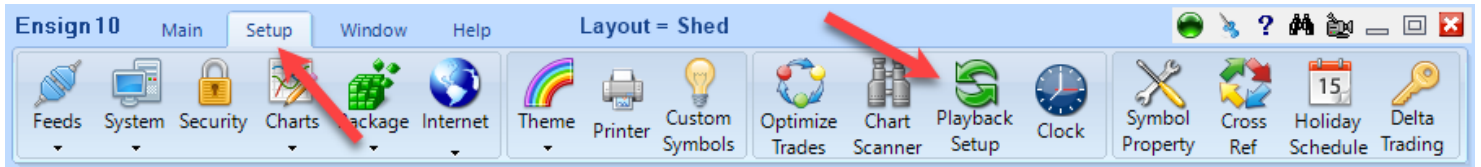


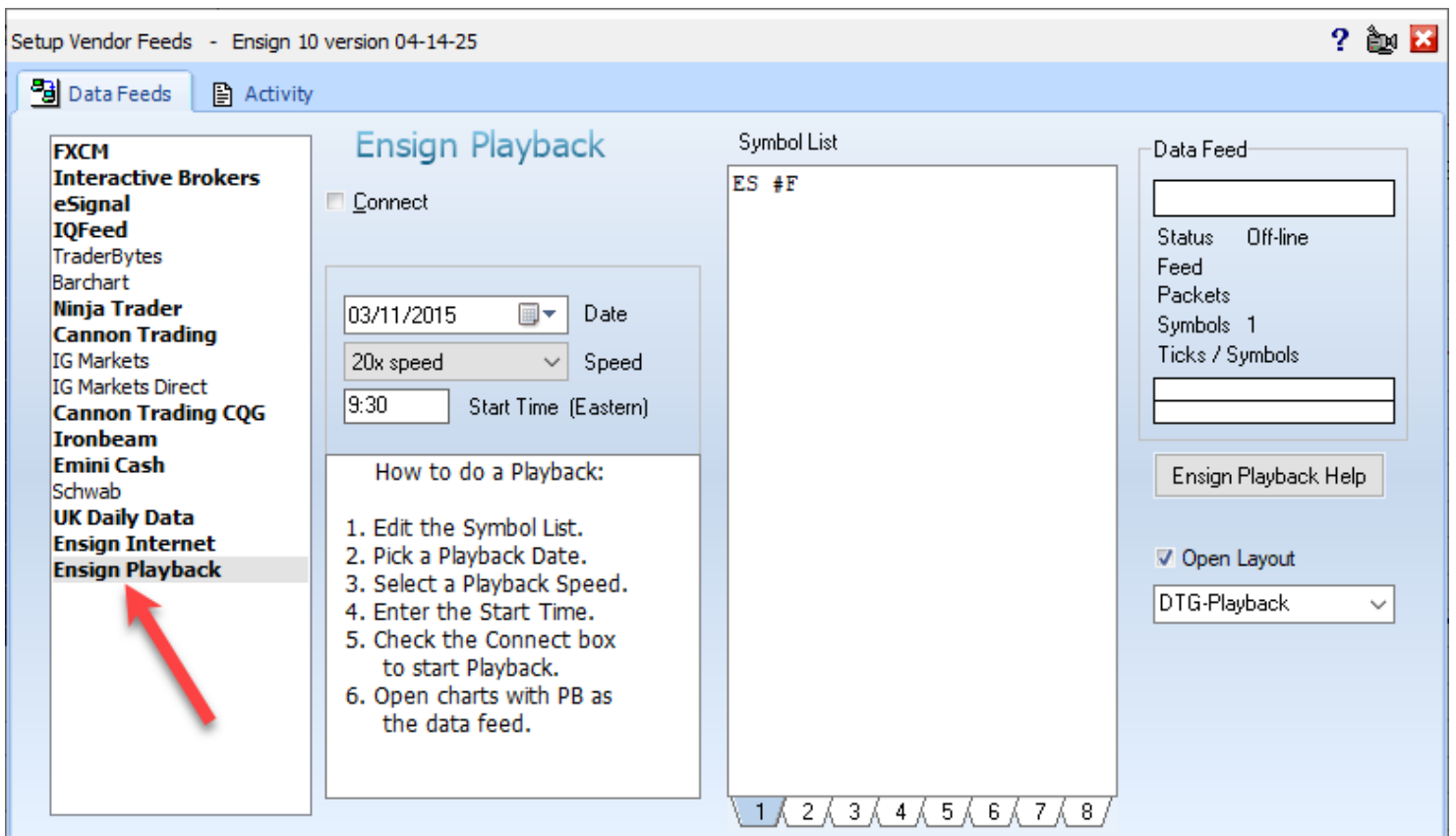
Playback

Click Setup | Playback Setup to use the Playback feature.



The Playback feature is a powerful tool that allows traders to practice their trading with real market data. The Playback feature allows you to replay (on a chart) the tick-by-tick trading that occurred for specified symbols. Tick data for the specified day is used to create a play file. The file can then be played at anytime just like a tape recorder can replay its recordings. The played file will duplicate the trading day in actual time or up to 20x the actual speed. Only 1 date can be played at one time.

Playback is implemented as a data feed and is listed as one of the supported data feeds on the Setup | Feeds screen. Select 'Ensign Playback' at the bottom of the list.

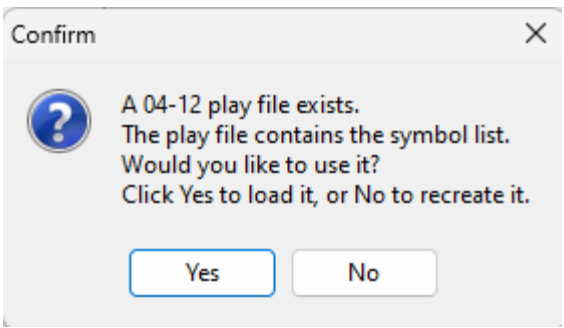
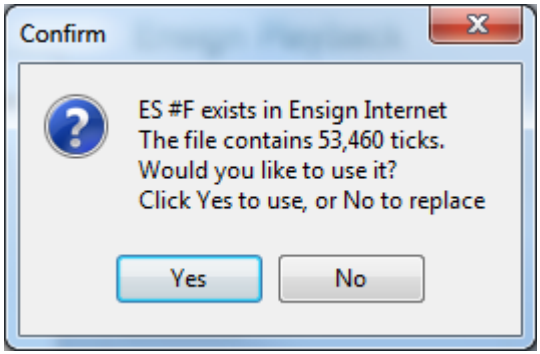


Setup Playback

1. The 'Symbol List' is used to specify which symbols that you want to playback. The example above shows the S&P 500 Emini symbol but more symbols could be on the list. Note: The number of symbols that you enter and the speed at which they are played will increase the CPU usage of your computer.
2. Pick a 'Date' (to be played) for the playback using the calendar selection tool.
3. Pick a playback speed using the 'Speed' combo box.
4. Enter a 'Start Time' for the playback. Data ahead of this time and date will appear on a chart when it is opened, and the playback session will be from the Start time and forward. The Start time is entered in a **hhmm** format using **Eastern** time. A typical entry is 9:30.
5. Start the Playback session by checking the 'Connect' box. The Connect process will search for data, download what is not found, and build a play file if one is not available.

Building a Play File

The Playback data feed reads data from a play file which is built from tick database files. These source files can be collected in real-time from your data vendor, obtained by refreshing a tick based chart, or downloaded from the Internet. The play file is created when the Connect box is checked to start the Playback.

	<p>If a play file exists, you are prompted whether the file should be used or recreated (most users click the 'No' button to recreate the file to make sure of its integrity).</p> <p>The prompt indicates whether the play file contains data for all the symbols on the symbol list.</p> <p>If symbols are missing, the file should be recreated by clicking the 'No' button.</p>
	<p>The play file is built from tick database files. Ensign will look for existing tick files and ask if the files should be used or replaced (most users click the 'No' button to recreate the file to make sure of its integrity).</p> <p>If a file is complete, click Yes to use it.</p> <p>If a file needs to be replaced, click No and Ensign will look for another file or download the file from the Internet using Barchart as a source.</p>

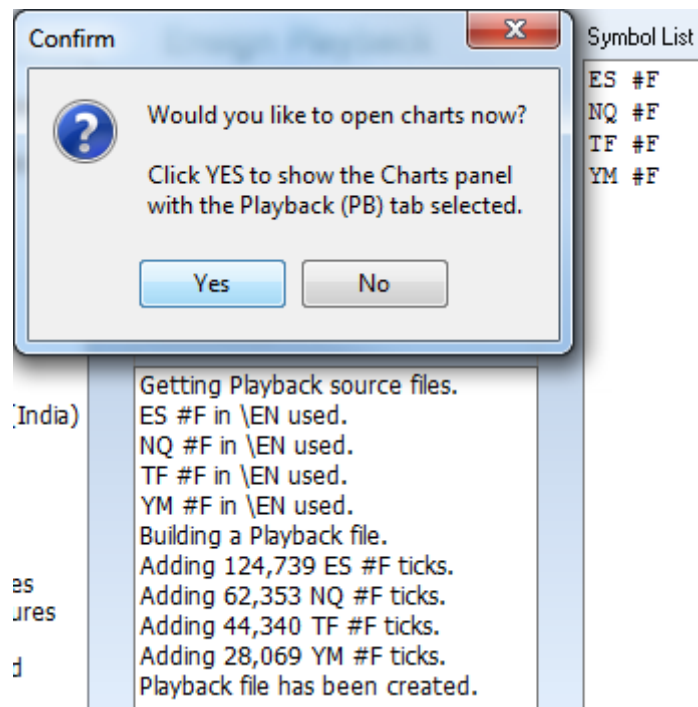
Data Source

The playback uses data already present on your computer collected in real-time from your data vendor. When the data is not found, tick data from Barchart is downloaded for dates within the past couple years for most futures and stocks symbols. This data is a useful resource for those who might not have access to a data vendor. Perhaps you are learning to trade and have not subscribed to a real-time data vendor.

Delta Trading Group customers can download playback data from Ensign's web site for the ES #F symbol from from 2015 to the current date.

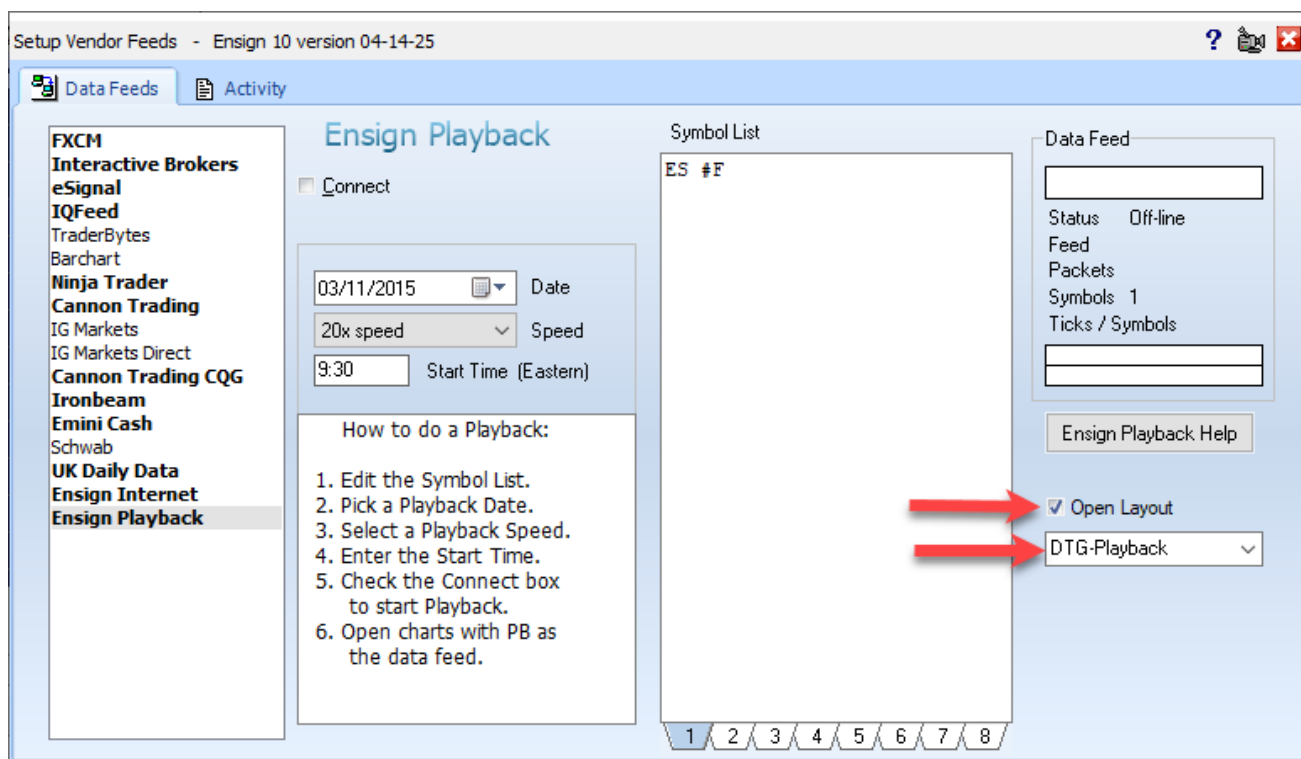
Open a Chart

After the play file has been loaded or created the Playback feed is started. You are then prompted to go to the Charts panel where you would open charts.

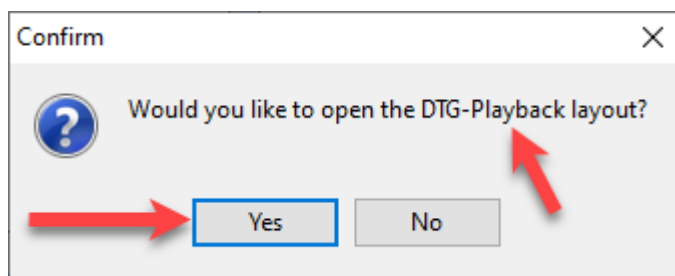


Open a Chart					
Feed	Symbols	Time	Tick	Range	Volume
**	ES #F	1	-55	R4	V10000
EN	NQ #F	2	-89	R100	V6250
FX	TF #F	3	-144	R150	V5000
IB	YM #F	4	-239	R250	V3000
ES		5	-450	R500	V500
TA		7			V50
IQ		8			V10
GI		9			
PB		10			
		15			

Optionally, a Layout can be opened instead of opening the Charts panel. Check the 'Open Layout' box and select the desired Layout to open from the drop down box.

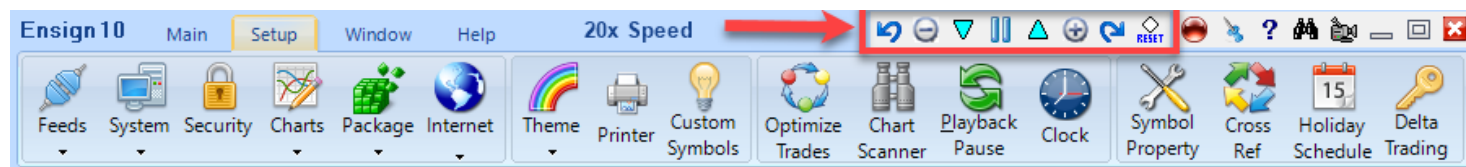


Once the Playback has downloaded, a prompt will ask if you want to open the selected layout. Click the 'Yes' button to load the desired layout:



Playback Controls

Toolbar



Click the Pause button on the toolbar to pause the playback feed. The button image will change to a Play button. Click the Play button to resume a playback. The button's Hint shows the current playback speed. Playback can also be paused by clicking the Playback Pause button on the Setup ribbon. Click

the button again to resume play. Also, Pause and Resume can be accomplished by pressing the space bar on the keyboard.

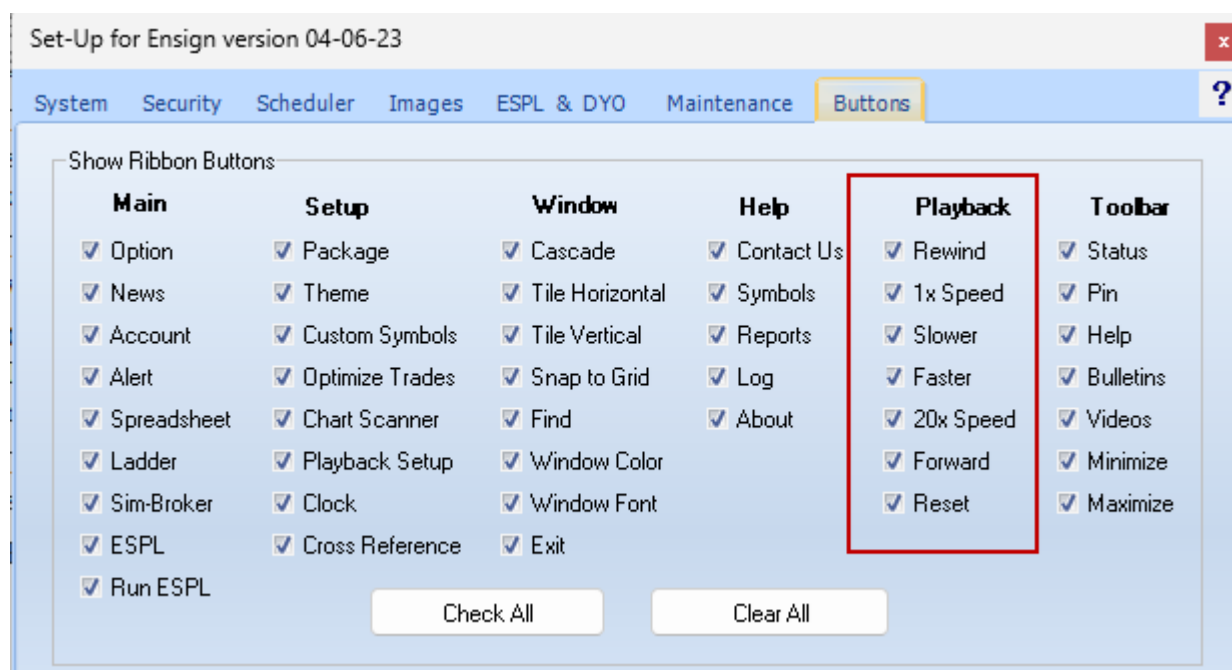
The play speed can be changed at any time using the two triangle buttons. The down button will change to a slower speed and the up button will to change to a faster speed. The button's Hint indicates the speed that will be changed to.

The button with the minus symbol will set the playback speed to Actual Speed. The button with the plus symbol will set the playback to 20x the actual speed.

Click the Rewind button to have the Playback go back 10-minutes in time and replay the data feed. Click the Jump Ahead button to have the Playback skip forward 10-minutes in time. These actions redraw the chart to remove, add or adjust bars so the playback can continue.

The Reset button will restart the playback at the beginning, which is at the Start Time entered on the Playback setup form.

Buttons on the playback toolbar can be hidden or shown using the Setup | System | Buttons form.



Summary

The Playback feature is used by traders to practice their trading. The trading day for specified symbols can be replayed at a specified speed. Studies, Draw Tools and trading ideas can be tested on the data. Multiple symbols can be played simultaneously.

When a Playback Chart is opened the bar data prior to the Playback Start Time will already appear on the chart. The remaining data will be played and added to the chart at the selected Playback speed. Charts can be refreshed from your data vendor or from Barchart to show additional historical data.

A Playback session can be paused, resumed, sped up or slowed down. A Playback session can be stopped and then restarted using a different Start Time. The play file does not need to be recreated when the feed is paused, resumed, stopped and restarted.