

# Layout

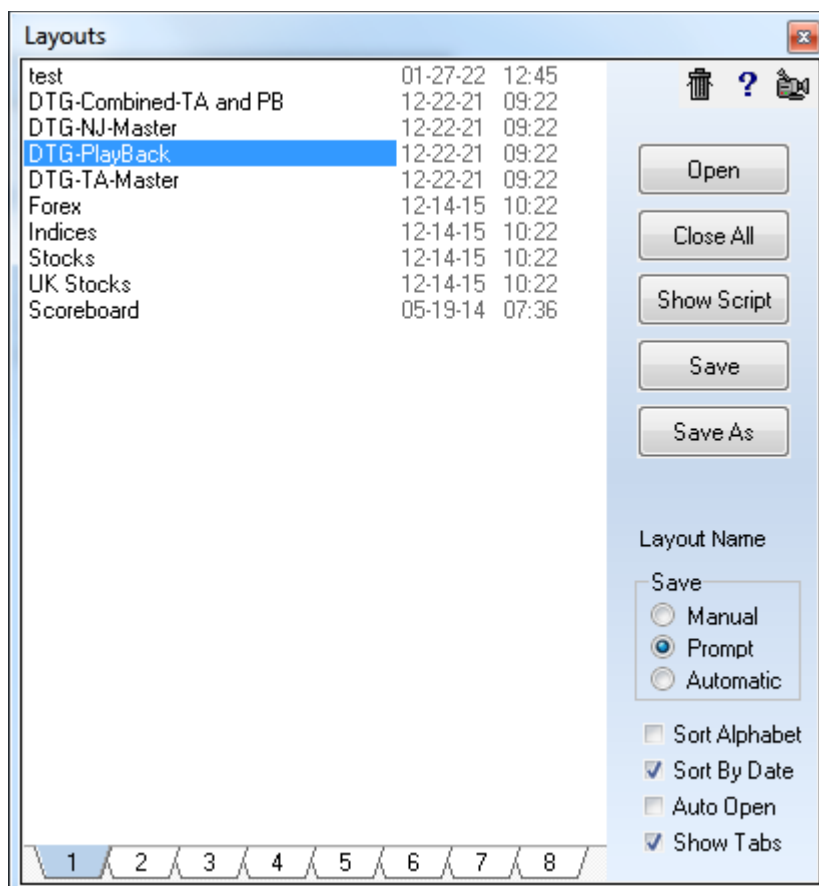


Click the Main | Layout button to open the Layouts panel. Ensign can display several charts, quote pages, and windows at the same time. A collection of open windows is called a Layout. Ensign allows you to save a layout so that it can be easily restored and viewed. Layouts remember the window locations and sizes, and enable traders to view their favorite charts and quote pages without having to repeatedly open, size, and move windows to the locations they are accustomed to. The layout will remember the layers and window locations and restore them when it is opened. Layouts also remember the status of the Lock Line Placement, Lock Studies, Lock Lines, and Price Magnet states.

## Creating and Saving a Layout

The first step in creating a new layout is to open several windows and position them on the screen. You can apply various studies and draw lines on the chart windows. The layout will remember every detail of each window that is opened. To save the layout, click the Save As button on the Layouts panel and then enter a layout name in the entry box. The layout name will be added to the list box. The screen will be memorized with all the open windows, studies, and tools. There is no limit to the number of layouts that can be saved. Click the Save button to resave a layout after making changes to the windows. To save a layout under a different name click on the Save As button and enter a new layout name. Place a check mark in the Save Prompt check box to enable an automatic reminder to save your layout anytime a layout is changed.

NOTE: While viewing a chart you can access the Layouts panel by right-clicking on the chart and selecting Layout Panel from the pop-up menu.

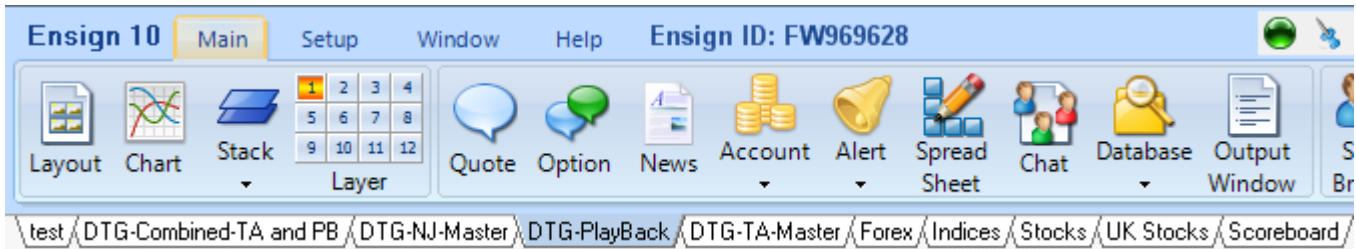


## Opening and Using Layouts

Layouts are opened from the layouts panel by selecting the layout name in the list box and then clicking the **Open** button. Double-clicking on the layout name will also open the layout.

Place a check mark in the **Auto Open** check box if you want the first layout in the list to automatically open and display when Ensign is run. Click the **X Close** button to close the layouts panel, or click the **Layout** button again.

Checking the **Show Tabs** box will display a tab for each layout under the main ribbon. The tabs can be used to open layouts. Changes to the layout form will update the tabs when the form is closed.



Function keys F2 through F11 can be used to open the first 10 layouts on the list.

Forms may have been located on multiple monitors when the layout was saved, but these monitors are no longer connected to the computer. Therefore, press **Ctrl-End** prior to opening a layout to force all forms to open on the primary monitor.

## Deleting and Repositioning Layouts

To delete a layout, click the **Layout** button and then select the layout name in the list box. Click the **Trash Can** button to delete the layout from the list box.

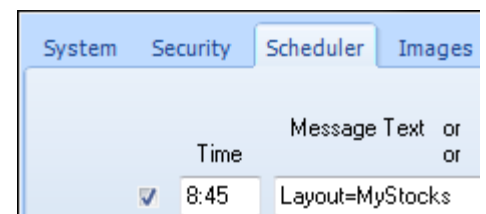
To rearrange the order of the list, drag a layout name vertically up or down on the list. To sort the layout names in alphabetical order place a check mark in the **Sort Alphabet** check box. Uncheck the box to arrange the layout names manually.

The list can also be sorted by date by checking the **Sort by Date** check box.

At the bottom of the layout list are 8 tabs for selecting a layout folder. The tabs permit layouts to be grouped on different tabs, and the layout files are stored in different folders on the hard disk. The layout folders are named `\Layout#` where # is a digit 1 through 8. You might use one folder for layouts under development, and another folder for permanent layouts. Layout files can be moved from one folder to another by dragging a layout name from the list to the desired **Tab** at the bottom of the list. Drop the file on the **Tab** (1-8) of your choice.

## Opening Layouts with the Scheduler

Layouts can be automatically opened at a specific time by using the Scheduler. Select **Set-Up | System | Scheduler** to show the Scheduler window. Each scheduler row can open a Layout. Enter the keywords 'Layout=Name' on a Message Text row (where 'Name' is the name of the Layout to open). For example, to display a layout named MyStocks, enter `Layout=MyStocks`. The layout named MyStocks will open at the specified time.

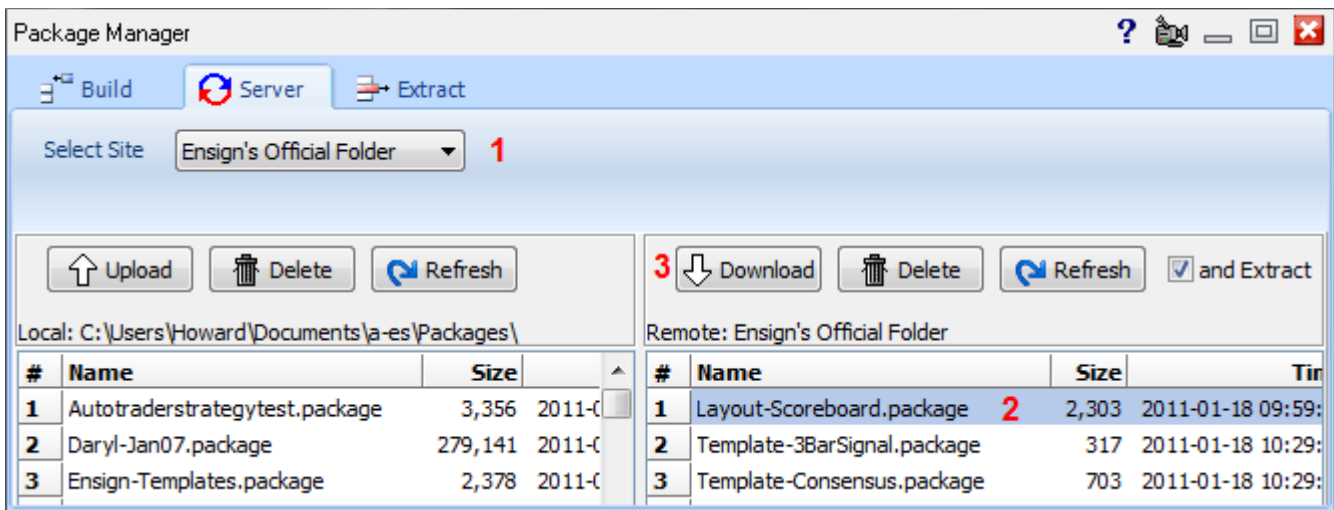


## Sharing Layouts with other Traders

If desired, layout files can be emailed to other Ensign users. This allows traders to share their layouts with their associates. Layouts are saved in text files in the \Ensign10\Layouts\Layout# folders, where # is a digit 1 through 8. The file name extension is .txt (example: MyStocks.TXT ). When a layout file is saved in the \Ensign10\Layouts\Layout1 folder, the new layout will appear in the layouts list for tab 1 the next time the layouts panel is opened. Including a layout file in a Package is the easiest way to distribute a layout to other traders.

## Downloading Layouts from Ensign's Web Site

Layout files can be downloaded from the Ensign internet servers. To download a file click the Setup | Package button, select the Server tab, and then select Ensign's Official Folder (from the Select Site drop-down list).



The layouts created by Ensign Software are located in this folder and begin with the word Layout. Layouts distributed by other traders are usually located in the General Public Folder. Select one or more packages to download from the server and click the Download button. Check the 'and Extract' box before downloading and the extraction of the layouts will be performed automatically after the packages are downloaded. The extraction saves the layout files in the same layout folder that they were packaged from.