

Layers

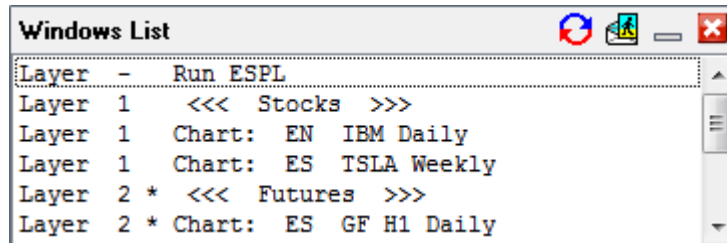
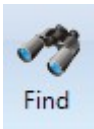


Click the Layer buttons (1 through 12) on the main ribbon to use the Layer feature. The Layer feature allows you to view a group of open windows based on the Layer that is selected. For example, select Layer 1, and then open and arrange 8 chart windows on your screen. Then click Layer 2. All the first 8 charts will be hidden (although still open and updating). You could then open and arrange several other charts in Layer 2. Click Layer 1 to switch the view back to the original 8 charts. Layer 2 will then be hidden. There are 12 different Layers that can potentially be setup with whatever charts and program windows that you like. Save a Layout to memorize all the Layers for later use. The Layers will be restored when the Layout is re-opened.

You can also change Layers from the chart pop-up menu, or using the keyboard. The keyboard keys of CTRL-1 through CTRL-0 will change layers. Select Setup | Charts | Keys to optionally enter Layers in the 'Keyboard Chart Time Frames or Layer#' boxes. For example, enter 'Layer3' in box 3. This will show Layer 3 whenever the number 3 is pressed on the 10-key pad on your keyboard. The Mouse Wheel can be also be configured to change layers on the Setup | Charts | Keys form. Choose 'Select Higher Layer' or 'Select Lower Layer' from the drop-down list to specify the Mouse Wheel action.

Select Window | Close from the ribbon to close all windows in all Layers. Select the Window | Close | Close Layer sub-menu to close just the windows in the current Layer.

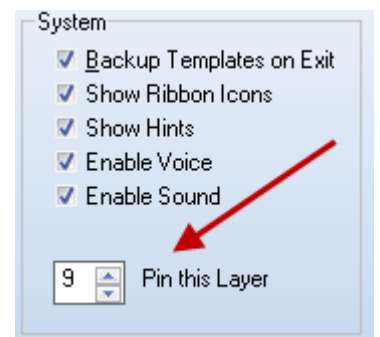
Select Window | Find on the main ribbon to display a list of all windows that are open in all Layers. Select an item in the resulting Windows List to display the item. The Layer will be changed if necessary to show the selected item.



Note: Do not open more charts and windows than your computer CPU can handle (with real-time updating). The Layer feature is great for organizing many different windows as long as you don't overwhelm your computer.

Pin this Layer

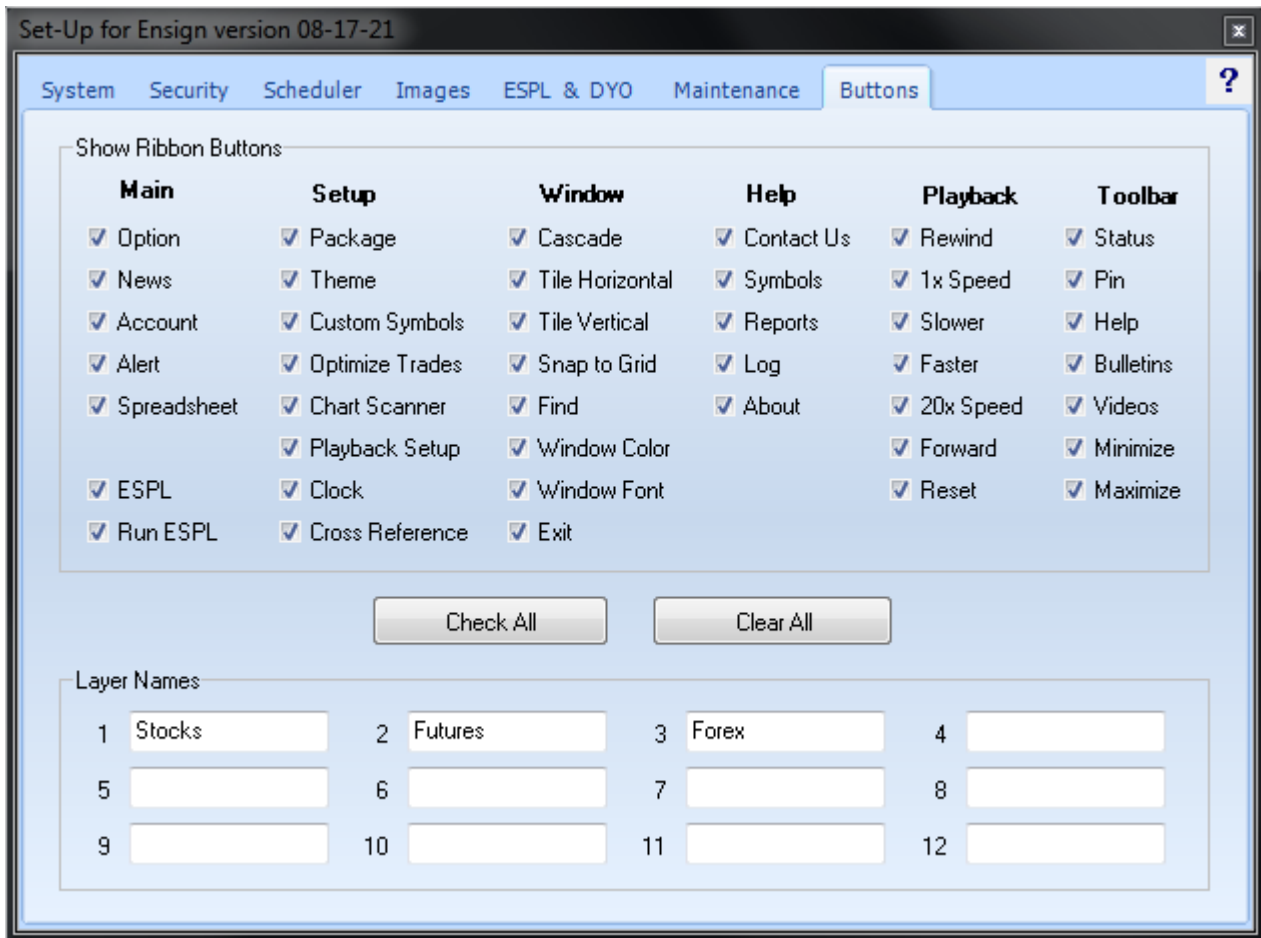
A Layer can be optionally pinned. A pinned Layer will appear in all other layers. For example, assume that there are 3 charts that you want to view in every layer. You could open and position those charts in Layer 1, and then pin Layer 1. You could then setup several other Layers with various charts and program windows. Since Layer 1 is pinned, the 3 charts from Layer 1 will be displayed in every other Layer. Make sure that you don't position other charts in the same screen location as the 3 original charts from Layer 1.



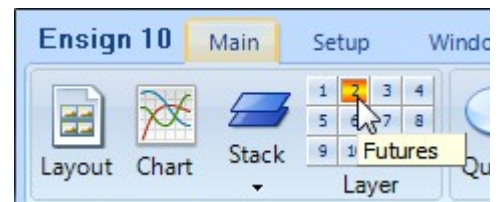
Select Setup | System from the ribbon menu to specify which Layer is to be pinned. Layer 9 is pinned in the example above. Enter a 0 value if you don't want any Layer to be pinned.



Naming Layers

Layers can be given names to help remember what charts are placed on your layers. Click menu Setup | System | Buttons. Enter names for your layers in the edit fields at the bottom of the form.



In this example Layer 1 has been named 'Stocks' and Layer 2 has been named 'Futures'. These names show as Hints when the cursor hovers over a Layer button on the Main Ribbon.



The layout's name will show on the Window | Find list as a title. Click the  button on the List form to sort the list by form titles. Click the  button again to toggle back to being sorted by Layer.

