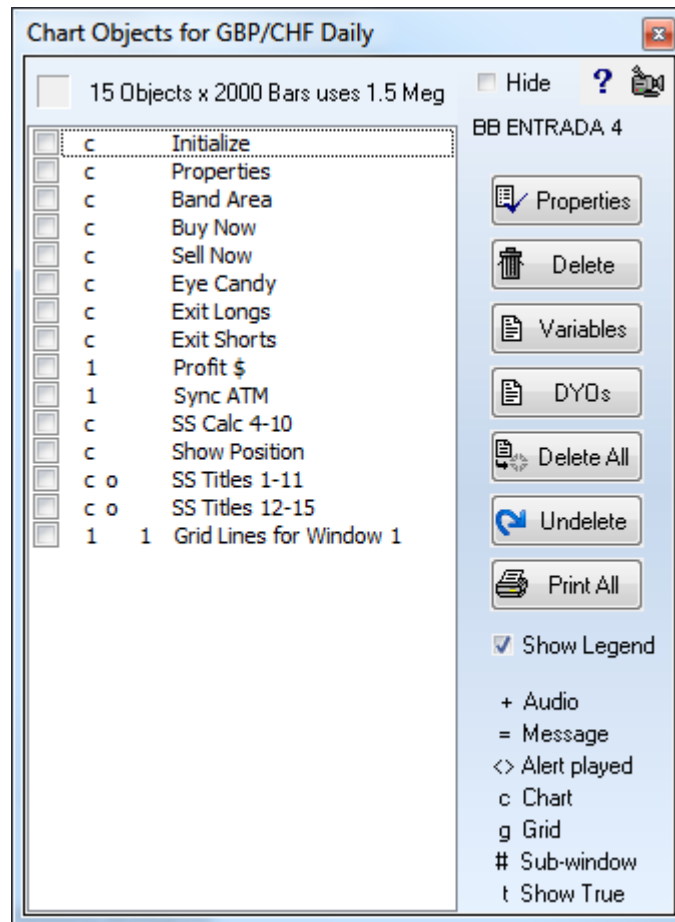


# Chart Objects



Click the Chart Objects button to open the Chart Objects panel. The Chart Objects panel displays a list of all the studies, draw tools, and objects that are currently applied to the chart. Charts can display dozens of studies, lines, notes, arrows, and tools. Each item placed on a chart is called a Chart Object. The Objects are displayed when the Chart Objects button is clicked.



Each Chart Object can be customized by selecting the object from the list, and then clicking the Properties button. Chart Objects can be removed from a chart by selecting the object (or group of objects), and then clicking the Delete button. Remove all chart objects from a chart by clicking the Delete All button. Click the Undelete button to restore the last study that was deleted. An object in the list can be repositioned by selecting the item and dragging it vertically up or down on the list. Note: Studies calculate in the order they appear on the list.

**Color Box** - A Color box is displayed in the top-left corner of the Chart Objects panel. The color of the box helps you distinguish between multiple objects of the same type. As Chart Objects are selected from the list, the color of the box will change to match the line color of the study. The color box will also contain the object's study value. The study value indicates the study parameter (ex. the number '10' would be displayed for a 10 period moving average).

**Show Legend** – Uncheck the Show Legend box to hide the legend details. The legend summarizes the settings that are associated with different chart objects and studies.

**Hide** - Check the 'Hide' box (top-right) to specify auto-closing of the Chart Objects panel when an object's property form is opened. Uncheck the box to have the panel remain open so that additional objects can be selected.

Each chart object in the list has a check box. Check the box to hide the chart object on the chart. Study objects still calculate although they are hidden.

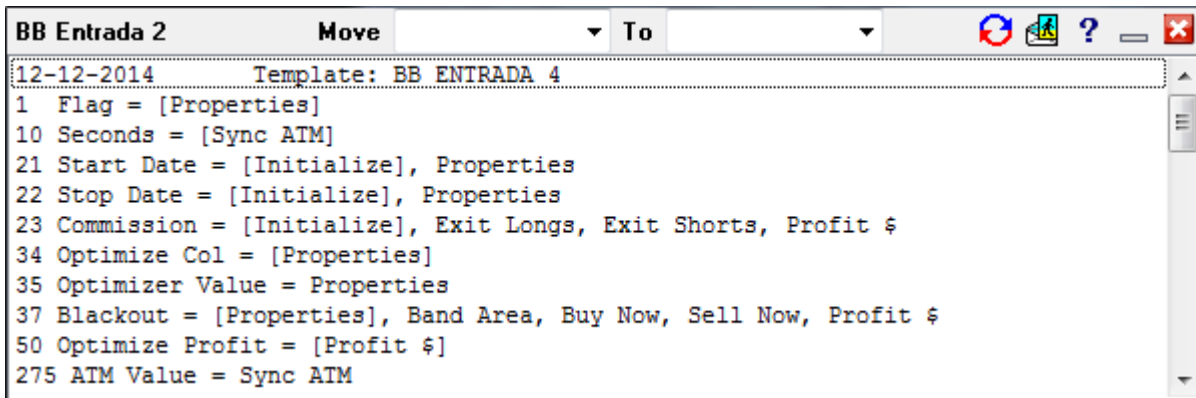
## Variables Report

Click the Variables button for a report showing where variables are used in DYOs and other chart objects.

Example: 21 Start Date = [Initialize], Properties

21 is the variable index. 'Start Date' is the custom name given to this variable.

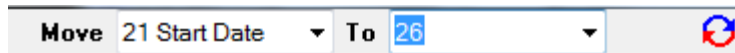
The variable is referenced in two DYOs named 'Initialize' and 'Properties'. Square brackets will surround a DYO's name when the variable is assigned a value in the DYO.



Variables can be moved from one index to another by using the Move and To drop down lists. After selecting the Move and the To locations, click the



button to perform the move.



In this example, variable 21 Start Date is being moved to the unused variable 26. Variable 21 would then be unused. All references to variable 21 would be changed to reference 26.

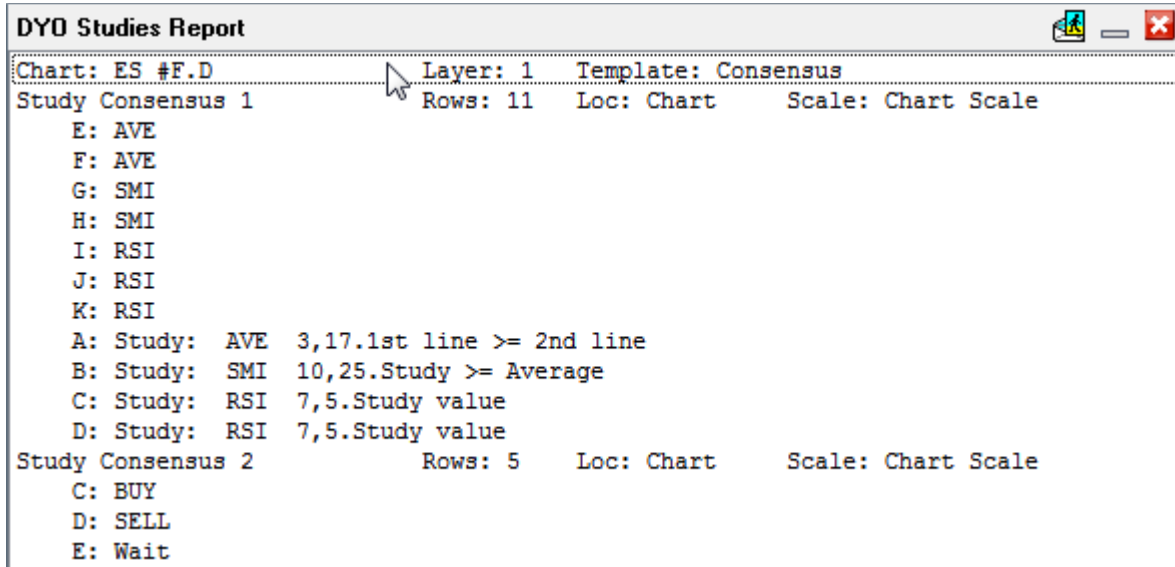
Tip: Clicking on a row in the report will set the selection in the Move drop down list.

Tip: Double clicking in the Move edit field or in the To edit field will erase the name assigned to the selected variable. The edit field will show just the index.

Tip: The name assigned to the variable index can be entered or edited in either the Move edit field or in the To edit field after the variable has been selected. Click in the edit field and enter a space and the variable name after the variable's index.

## DYOs Report

Click the DYOs button to view a report of all the DYOSs on a chart. The report summarizes the DYO objects, their labels and studies that are referenced.



In the example report, the DYO named 'Study Consensus 1' contains 11 rows of script, plots on the chart, and uses the Chart Scale. Rows E through K contain text labels as shown in the report. Rows A through D reference other study objects on the chart.

Tip: Clicking on a row in the report will open the property form for that chart object.

## Print All

Click the Print All button to have the program open the property form for every object on the chart, and print a copy of the object's property form. This is a quick way to create printed documentation of the objects that make up a template's design.