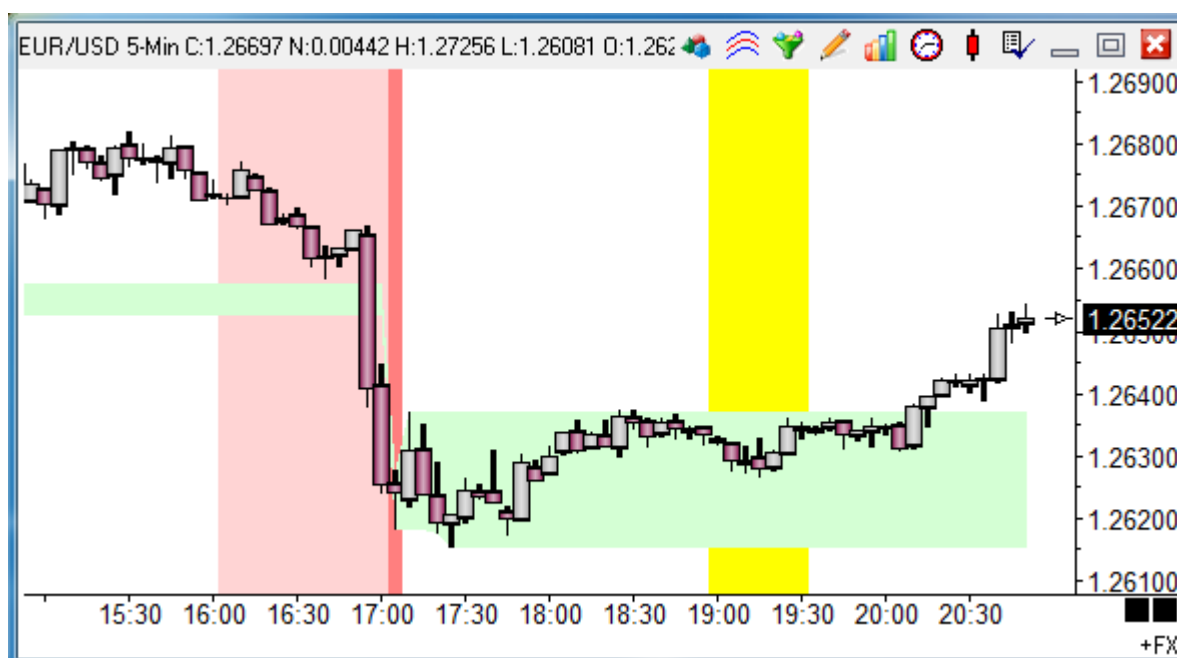


Price and Time Bands

This example demonstrates coloring a price range and time periods.



Study Name: Price and Time Bands | Study Location: Chart | Marker Location: Study Value | Label Location: None | Grid Tab: Default

Study Scale: Chart Scale | Variables File: Ensign | Message Location: None

Message Text: | Font: True (Black), False (Green), Panel (Red), (Yellow)

Sound: Silent Beep WAV Copy to Clipboard Sound once per bar

Trading System: Price: Last | Quantity: 0 | Commission: 0

Category	Variable	Selection #1 & #3	Op. [#]	Selection #2 & #4	Offset	Show Marker	Color
Flag	0	= #2 between #3 & #4		Time	0	<input checked="" type="checkbox"/>	ZON Yellow
		(1900		1930	0		
A	Chart Value	[0] := 30 Minute High after 2nd Open				<input checked="" type="checkbox"/>	Study Value Green
B	Chart Value	[0] := 30 Minute Low after 2nd Open				<input type="checkbox"/>	
C						<input type="checkbox"/>	
D	Flag	[0] := 1st bar of New Trade Day				<input checked="" type="checkbox"/>	ZON Red Study Value
E	Flag	[0] := In 60 min before Session 1 End				<input checked="" type="checkbox"/>	ZON Light Red Study Value
F	Flag	[0] := Time between 1900 & 1930				<input checked="" type="checkbox"/>	ZON Yellow Study Value

A - B – The high and low from the 1st 30 minute period of the 2nd session is returned. The bow tie fill marker on row A colors a band between 2 prices. The marker uses 2 prices which are obtained from the row the marker is on and the next adjacent row.

D – This illustrates marking a single time stamp with the ZON zone marker.

E – This is an example of marking a period of time before or after a session boundary.

F – This colors a period of time. Row F is True when selection #2 (Time) is between selection #3 (1900) and selection #4 (1930). The two times for the test are integers in the 24-hour format of hhmm.

Show Marker

The Show box must to be checked for a row's Marker and/or Label to be shown.

For rows which return prices or study values, the Marker is always shown, as in this example's row A.

For rows which return Boolean flags, the row marker is displayed only when the flag is True, as in this example's row F.