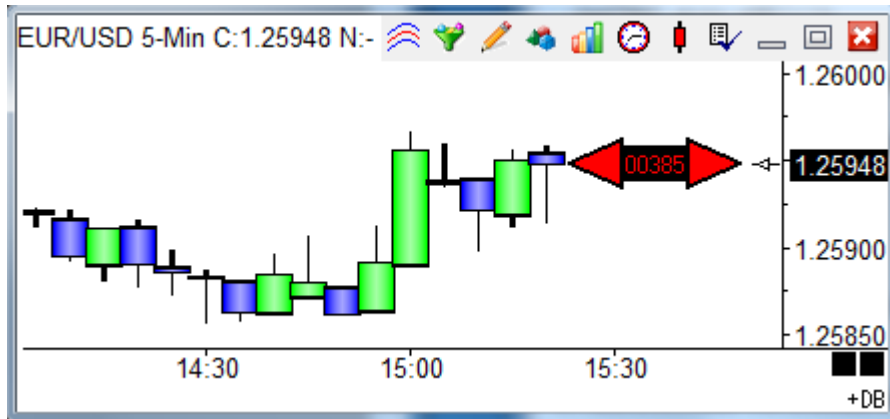


Net Price Marker

This example displays a price marker in the right side margin that points to the last trade price, shows the daily net, and changes colors based on the current bar's close being above or below its open. The marker will move up and down as ticks are received. The colors change from green to red to yellow depending on the net with the bar's open and the daily net value is shown in the body of the marker.



Study Name: Net Price Marker
 Study Location: Chart
 Marker Location: Last
 Label Location: Column 3
 Grid Tab: None
 Study Scale: Chart Scale
 Variables File: Ensign
 Message Location: None
 Message Text:
 Font: True (Black), False (Green), Panel (Red), (White)
 Sound: Silent, Beep, Voice, WAV, Sound once per bar
 WAV file: Browse
 Trading System: Price: Last, Quantity: 1, Commission: 0

Category	Variable	Selection #1 & #3	Op. [#]	Selection #2 & #4	Offset	Show	Marker	Color
Action	0	= if ## then marker in column #2		6.5	2	<input checked="" type="checkbox"/>	<input type="checkbox"/>	Black
		{ True			0			
A	Action	if (True) then marker in column 6.5				<input checked="" type="checkbox"/>	<input type="checkbox"/>	Black
B	Expression	[0] := Close > Open				<input checked="" type="checkbox"/>	<input type="checkbox"/>	Green
C	Expression	[0] := Close = Open				<input checked="" type="checkbox"/>	<input type="checkbox"/>	Yellow
D	Expression	[0] := Close < Open				<input checked="" type="checkbox"/>	<input type="checkbox"/>	Red
E	Action	if (True) then marker in column 3				<input checked="" type="checkbox"/>	<input type="checkbox"/>	Black
F	Action	if (True) then marker in column 10				<input checked="" type="checkbox"/>	<input type="checkbox"/>	Black

A – Display the Rectangle marker vertically at the Last price position and filled with the Black color. The marker's horizontal location is column 6.5, which is 52 pixels to the right of the last bar's plot position. Each column is 8 pixels in width.

B – If the Close is greater than the Open, the paint color is set to Green.

C – If the Close is equal to the Open, the paint color is set to Yellow.

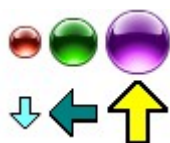
D – If the Close is less than the Open, the paint color is set to Red.

E – Display the Left Triangle marker in column 3.1, using the paint color. The paint color is used because the Color selection is Black. The paint color was set to Green, Yellow, or Red by rows B, C or D. This row also shows a label horizontally in Label Column 3. The label text is a reference tag for the daily Net for this chart's symbol. The label text also uses the paint color.

F – Display the Right Triangle marker in column 10.5, using the paint color. The vertical placement of the marker is also at the Last price, which is the vertical location used by row A and E.

Marker Size

For the 'Action | if ## then marker in column #2' selection only, the Offset entry controls the size of 32 marker selections that are icons. An Offset of 0 selects the 16 pixel icon size. An Offset of 1 selects a 24 pixel icon. An Offset of 2 selects a 32 pixel icon. Rows A, E and F in the example use Offset = 2 to show large 32 pixel icons.



Paint Color

The paint color is set when the Show box is checked but no Marker is selected. The paint color is then used by a later row when its Color selection is Black.